

SFRS14 Polyclonal Antibody

Catalog # AP72447

Product Information

Application	WB
Primary Accession	Q8IX01
Reactivity	Human
Host	Rabbit
Clonality	Polyclonal
Calculated MW	120207

Additional Information

Gene ID	10147
Other Names	SUGP2; KIAA0365; SFRS14; SURP and G-patch domain-containing protein 2; Arginine/serine-rich-splicing factor 14; Splicing factor; arginine/serine-rich 14
Dilution	WB~~Western Blot: 1/500 - 1/2000. ELISA: 1/5000. Not yet tested in other applications.
Format	Liquid in PBS containing 50% glycerol, 0.5% BSA and 0.09% (W/V) sodium azide.
Storage Conditions	-20°C

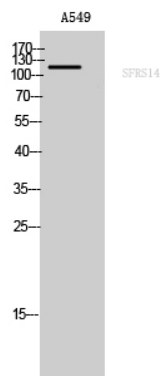
Protein Information

Name	SUGP2
Synonyms	KIAA0365, SFRS14
Function	May play a role in mRNA splicing.
Cellular Location	Nucleus.
Tissue Location	Detected in adult testis, and in fetal brain and kidney.

Background

May play a role in mRNA splicing.

Images



Western Blot analysis of A549 cells using SFRS14
Polyclonal Antibody cells nucleus extracted by Minute TM
Cytoplasmic and Nuclear Fractionation kit
(SC-003, Inventbiotech, MN, USA).

Please note: All products are 'FOR RESEARCH USE ONLY. NOT FOR USE IN DIAGNOSTIC OR THERAPEUTIC PROCEDURES'.