

Sgo1 Polyclonal Antibody

Catalog # AP72458

Product Information

Application	WB, IHC-P
Primary Accession	Q5FBB7
Reactivity	Human
Host	Rabbit
Clonality	Polyclonal
Calculated MW	64190

Additional Information

Gene ID	151648
Other Names	SGOL1; SGO1; Shugoshin-like 1; hSgo1; Serologically defined breast cancer antigen NY-BR-85
Dilution	WB~~Western Blot: 1/500 - 1/2000. Immunohistochemistry: 1/100 - 1/300. ELISA: 1/20000. Not yet tested in other applications. IHC-P~~N/A
Format	Liquid in PBS containing 50% glycerol, 0.5% BSA and 0.09% (W/V) sodium azide.
Storage Conditions	-20°C

Protein Information

Name	SGO1 (HGNC:25088)
Synonyms	SGOL1
Function	Plays a central role in chromosome cohesion during mitosis by preventing premature dissociation of cohesin complex from centromeres after prophase, when most of cohesin complex dissociates from chromosomes arms. May act by preventing phosphorylation of the STAG2 subunit of cohesin complex at the centromere, ensuring cohesin persistence at centromere until cohesin cleavage by ESPL1/separase at anaphase. Essential for proper chromosome segregation during mitosis and this function requires interaction with PPP2R1A. Its phosphorylated form is necessary for chromosome congression and for the proper attachment of spindle microtubule to the kinetochore. Necessary for kinetochore localization of PLK1 and CENPF. May play a role in the tension sensing mechanism of the spindle-assembly checkpoint by regulating PLK1 kinetochore affinity. Isoform 3 plays a role in maintaining centriole cohesion involved in controlling spindle pole integrity. Involved in centromeric enrichment of AUKRB in prometaphase.

Cellular Location

Nucleus. Chromosome, centromere. Chromosome, centromere, kinetochore. Cytoplasm, cytoskeleton, spindle pole. Cytoplasm, cytoskeleton, microtubule organizing center, centrosome. Nucleus speckle. Note=Localizes to the inner centromere throughout prophase until metaphase and disappears at anaphase (PubMed:16541025). Centromeric localization requires the presence of BUB1 and the interaction with PPP2R1A (PubMed:15604152, PubMed:16541025, PubMed:16580887). Colocalizes with NEK2 at the kinetochore (PubMed:17621308). Colocalizes with and SS18L1 at the kinetochore (PubMed:16582621). Phosphorylation by AUKRB and the presence of BUB1 are required for localization to the kinetochore (PubMed:17617734). Isoform 1 primarily localizes to kinetochores during G2 phase and mitotic prophase, metaphase, and anaphase and does not appear to be associated with kinetochores during late mitosis (PubMed:16582621). Isoform 3 is found at the centrosome in interphase and at spindle poles in mitosis and its spindle pole localization is PLK1 dependent (PubMed:16582621). Isoform 3 does not localize to kinetochores during any stages of the cell cycle (PubMed:16582621)

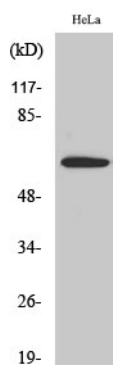
Tissue Location

Widely expressed. Highly expressed in testis. Expressed in lung, small intestine, breast, liver and placenta Strongly overexpressed in 90% of breast cancers tested

Background

Plays a central role in chromosome cohesion during mitosis by preventing premature dissociation of cohesin complex from centromeres after prophase, when most of cohesin complex dissociates from chromosomes arms. May act by preventing phosphorylation of the STAG2 subunit of cohesin complex at the centromere, ensuring cohesin persistence at centromere until cohesin cleavage by ESPL1/separase at anaphase. Essential for proper chromosome segregation during mitosis and this function requires interaction with PPP2R1A. Its phosphorylated form is necessary for chromosome congression and for the proper attachment of spindle microtubule to the kinetochore. Necessary for kinetochore localization of PLK1 and CENPF. May play a role in the tension sensing mechanism of the spindle-assembly checkpoint by regulating PLK1 kinetochore affinity. Isoform 3 plays a role in maintaining centriole cohesion involved in controlling spindle pole integrity. Involved in centromeric enrichment of AUKRB in prometaphase.

Images



Western Blot analysis of various cells using Sgo1 Polyclonal Antibody cells nucleus extracted by Minute TM Cytoplasmic and Nuclear Fractionation kit (SC-003, Invent biotech, MN, USA).

Please note: All products are 'FOR RESEARCH USE ONLY. NOT FOR USE IN DIAGNOSTIC OR THERAPEUTIC PROCEDURES'.