

# SLC17A2 Polyclonal Antibody

Catalog # AP72497

## Product Information

---

Application	WB
Primary Accession	<a href="#">O00624</a>
Reactivity	Human, Mouse
Host	Rabbit
Clonality	Polyclonal
Calculated MW	47277

## Additional Information

---

Gene ID	10246
Other Names	SLC17A2; NPT3; Sodium-dependent phosphate transport protein 3; Na(+)/PI cotransporter 3; Sodium/phosphate cotransporter 3; Solute carrier family 17 member 2
Dilution	WB~~Western Blot: 1/500 - 1/2000. ELISA: 1/40000. Not yet tested in other applications.
Format	Liquid in PBS containing 50% glycerol, 0.5% BSA and 0.09% (W/V) sodium azide.
Storage Conditions	-20°C

## Protein Information

---

Name	SLC17A2
Synonyms	NPT3
Function	Acts as a membrane potential-dependent organic anion transporter, the transport requires a low concentration of chloride ions (By similarity). Mediates chloride-dependent transport of urate (By similarity). Can actively transport inorganic phosphate into cells via Na(+) cotransport (By similarity).
Cellular Location	Apical cell membrane {ECO:0000250 UniProtKB:Q5SZA1}; Multi-pass membrane protein
Tissue Location	Expressed in the small intestine, kidney, spleen and testis. Not detected in fetal brain, bone marrow, and mammary gland.

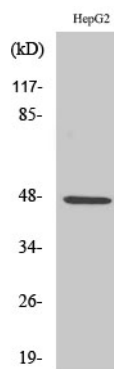
## Background

---

May be involved in actively transporting phosphate into cells via Na(+) cotransport.

## Images

---



Western Blot analysis of various cells using SLC17A2 Polyclonal Antibody

Please note: All products are 'FOR RESEARCH USE ONLY. NOT FOR USE IN DIAGNOSTIC OR THERAPEUTIC PROCEDURES'.