

# SLC43A1 Polyclonal Antibody

Catalog # AP72498

## Product Information

Application	WB
Primary Accession	<a href="#">O75387</a>
Reactivity	Human
Host	Rabbit
Clonality	Polyclonal
Calculated MW	61477

## Additional Information

Gene ID	8501
Other Names	SLC43A1; LAT3; PB39; POV1; Large neutral amino acids transporter small subunit 3; L-type amino acid transporter 3; Prostate cancer overexpressed gene 1 protein; Solute carrier family 43 member 1
Dilution	WB~~Western Blot: 1/500 - 1/2000. ELISA: 1/20000. Not yet tested in other applications.
Format	Liquid in PBS containing 50% glycerol, 0.5% BSA and 0.09% (W/V) sodium azide.
Storage Conditions	-20°C

## Protein Information

Name	SLC43A1 {ECO:0000312 EMBL:AAH01639.1}
Function	Uniport that mediates the transport of neutral amino acids such as L-leucine, L-isoleucine, L-valine, and L-phenylalanine (PubMed: <a href="#">12930836</a> ). The transport activity is sodium ions-independent, electroneutral and mediated by a facilitated diffusion (PubMed: <a href="#">12930836</a> ).
Cellular Location	Cell membrane {ECO:0000250 UniProtKB:Q8BSM7}; Multi-pass membrane protein. Apical cell membrane; Multi-pass membrane protein. Endoplasmic reticulum membrane {ECO:0000250 UniProtKB:Q8BSM7}; Multi-pass membrane protein. Note=Located in the apical plasma membrane of the podocyte foot processes (PubMed:19443642). Located in the plasma membrane of liver and skeletal muscle, and in the endoplasmic reticulum and in crystalline inclusions in pancreatic acinar cells (By similarity). {ECO:0000250 UniProtKB:Q8BSM7, ECO:0000269 PubMed:19443642}
Tissue Location	Ubiquitously expressed in fetus and adult (PubMed:9722952). Highest expression in adult pancreas, liver, skeletal muscle (PubMed:12930836,

PubMed:9722952). In fetus, highest expression in liver and lower levels in kidney, and lung (PubMed:12930836) Exclusively expressed in the glomeruli along the glomerular capillary walls (PubMed:19443642).

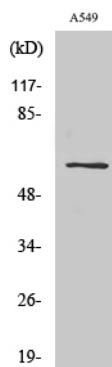
## Background

---

Sodium-independent, high affinity transport of large neutral amino acids. Has narrower substrate selectivity compared to SLC7A5 and SLC7A8 and mainly transports branched-chain amino acids and phenylalanine. Plays a role in the development of human prostate cancer, from prostatic intraepithelial neoplasia to invasive prostate cancer.

## Images

---



Western Blot analysis of various cells using SLC43A1 Polyclonal Antibody

Please note: All products are 'FOR RESEARCH USE ONLY. NOT FOR USE IN DIAGNOSTIC OR THERAPEUTIC PROCEDURES'.