

# SLC6A8 Polyclonal Antibody

Catalog # AP72501

## Product Information

---

<b>Application</b>	WB
<b>Primary Accession</b>	<a href="#">P48029</a>
<b>Reactivity</b>	Human, Mouse, Rat
<b>Host</b>	Rabbit
<b>Clonality</b>	Polyclonal
<b>Calculated MW</b>	70523

## Additional Information

---

<b>Gene ID</b>	6535
<b>Other Names</b>	SLC6A8; Sodium- and chloride-dependent creatine transporter 1; CT1; Creatine transporter 1; Solute carrier family 6 member 8
<b>Dilution</b>	WB~~Western Blot: 1/500 - 1/2000. ELISA: 1/10000. Not yet tested in other applications.
<b>Format</b>	Liquid in PBS containing 50% glycerol, 0.5% BSA and 0.09% (W/V) sodium azide.
<b>Storage Conditions</b>	-20°C

## Protein Information

---

<b>Name</b>	SLC6A8
<b>Function</b>	Creatine:sodium symporter which mediates the uptake of creatine (PubMed: <a href="#">17465020</a> , PubMed: <a href="#">22644605</a> , PubMed: <a href="#">25861866</a> , PubMed: <a href="#">7945388</a> , PubMed: <a href="#">7953292</a> , PubMed: <a href="#">9882430</a> ). Plays an important role in supplying creatine to the brain via the blood-brain barrier (By similarity).
<b>Cellular Location</b>	Cell membrane; Multi-pass membrane protein. Apical cell membrane; Multi-pass membrane protein
<b>Tissue Location</b>	Predominantly expressed in skeletal muscle and kidney. Also found in brain, heart, colon, testis and prostate

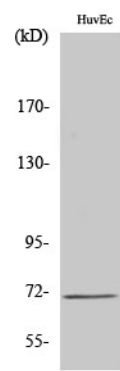
## Background

---

Required for the uptake of creatine in muscles and brain.

# Images

---



Western Blot analysis of various cells using SLC6A8 Polyclonal Antibody

Please note: All products are 'FOR RESEARCH USE ONLY. NOT FOR USE IN DIAGNOSTIC OR THERAPEUTIC PROCEDURES'.