

SLK Polyclonal Antibody

Catalog # AP72503

Product Information

Application	WB, IHC-P, IF
Primary Accession	Q9H2G2
Reactivity	Human, Mouse, Rat
Host	Rabbit
Clonality	Polyclonal
Calculated MW	142695

Additional Information

Gene ID	9748
Other Names	SLK; KIAA0204; STK2; STE20-like serine/threonine-protein kinase; STE20-like kinase; hSLK; CTCL tumor antigen se20-9; STE20-related serine/threonine-protein kinase; STE20-related kinase; Serine/threonine-protein kinase 2
Dilution	WB~~Western Blot: 1/500 - 1/2000. Immunohistochemistry: 1/100 - 1/300. Immunofluorescence: 1/200 - 1/1000. ELISA: 1/5000. Not yet tested in other applications. IHC-P~~N/A IF~~1:50~200
Format	Liquid in PBS containing 50% glycerol, 0.5% BSA and 0.09% (W/V) sodium azide.
Storage Conditions	-20°C

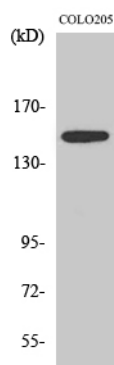
Protein Information

Name	SLK
Synonyms	KIAA0204, STK2
Function	Mediates apoptosis and actin stress fiber dissolution.
Cellular Location	Cytoplasm.
Tissue Location	Ubiquitously expressed. Highest expression is found in heart and in skeletal muscle.

Background

Mediates apoptosis and actin stress fiber dissolution.

Images



Western Blot analysis of various cells using SLK Polyclonal Antibody diluted at 1 : 1000

Please note: All products are 'FOR RESEARCH USE ONLY. NOT FOR USE IN DIAGNOSTIC OR THERAPEUTIC PROCEDURES'.