

# SnoN Polyclonal Antibody

Catalog # AP72539

## Product Information

---

<b>Application</b>	WB, IHC-P
<b>Primary Accession</b>	<a href="#">P12757</a>
<b>Reactivity</b>	Human, Mouse
<b>Host</b>	Rabbit
<b>Clonality</b>	Polyclonal
<b>Calculated MW</b>	76976

## Additional Information

---

<b>Gene ID</b>	6498
<b>Other Names</b>	SKIL; SNO; Ski-like protein; Ski-related oncogene; Ski-related protein
<b>Dilution</b>	WB~~Western Blot: 1/500 - 1/2000. Immunohistochemistry: 1/100 - 1/300. ELISA: 1/40000. Not yet tested in other applications. IHC-P~~N/A
<b>Format</b>	Liquid in PBS containing 50% glycerol, 0.5% BSA and 0.09% (W/V) sodium azide.
<b>Storage Conditions</b>	-20°C

## Protein Information

---

<b>Name</b>	SKIL
<b>Synonyms</b>	SNO
<b>Function</b>	May have regulatory role in cell division or differentiation in response to extracellular signals.
<b>Tissue Location</b>	Isoform SNON and isoform SNOA are widely expressed. Highest expression is found in skeletal muscle, followed by placenta and lung. Lowest expression in heart, brain and pancreas. Isoform SNOI expression is restricted to skeletal muscle

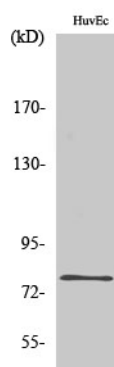
## Background

---

May have regulatory role in cell division or differentiation in response to extracellular signals.

## Images

---



Western Blot analysis of various cells using SnoN Polyclonal Antibody diluted at 1 : 1000 cells nucleus extracted by Minute TM Cytoplasmic and Nuclear Fractionation kit (SC-003, Invent biotech, MN, USA).

Please note: All products are 'FOR RESEARCH USE ONLY. NOT FOR USE IN DIAGNOSTIC OR THERAPEUTIC PROCEDURES'.