

Splicing factor 1 Polyclonal Antibody

Catalog # AP72570

Product Information

Application	WB, IHC-P, IF
Primary Accession	Q15637
Reactivity	Human, Mouse
Host	Rabbit
Clonality	Polyclonal
Calculated MW	68330

Additional Information

Gene ID	7536
Other Names	SF1; ZFM1; ZNF162; Splicing factor 1; Mammalian branch point-binding protein; BBP; mBBP; Transcription factor ZFM1; Zinc finger gene in MEN1 locus; Zinc finger protein 162
Dilution	WB~~Western Blot: 1/500 - 1/2000. Immunohistochemistry: 1/100 - 1/300. Immunofluorescence: 1/200 - 1/1000. ELISA: 1/20000. Not yet tested in other applications. IHC-P~~N/A IF~~1:50~200
Format	Liquid in PBS containing 50% glycerol, 0.5% BSA and 0.09% (W/V) sodium azide.
Storage Conditions	-20°C

Protein Information

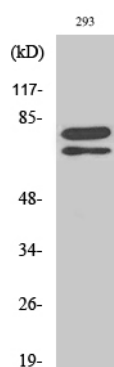
Name	SF1
Synonyms	ZFM1, ZNF162
Function	Necessary for the ATP-dependent first step of spliceosome assembly. Binds to the intron branch point sequence (BPS) 5'-UACUAAC-3' of the pre-mRNA. May act as transcription repressor.
Cellular Location	Nucleus.
Tissue Location	Detected in lung, ovary, adrenal gland, colon, kidney, muscle, pancreas, thyroid, placenta, brain, liver and heart

Background

Necessary for the ATP-dependent first step of spliceosome assembly. Binds to the intron branch point

sequence (BPS) 5'-UACUAAC-3' of the pre-mRNA. May act as transcription repressor.

Images



Western Blot analysis of various cells using Splicing factor
1 Polyclonal Antibody diluted at 1 : 500

Please note: All products are 'FOR RESEARCH USE ONLY. NOT FOR USE IN DIAGNOSTIC OR THERAPEUTIC PROCEDURES'.