

SRp46 Polyclonal Antibody

Catalog # AP72602

Product Information

Application	WB, IHC-P
Primary Accession	Q9BRL6
Reactivity	Human
Host	Rabbit
Clonality	Polyclonal
Calculated MW	32288

Additional Information

Gene ID	10929
Other Names	SRSF8; SFRS2B; SRP46; Serine/arginine-rich splicing factor 8; Pre-mRNA-splicing factor SRP46; Splicing factor SRp46; Splicing factor; arginine/serine-rich 2B
Dilution	WB~~Western Blot: 1/500 - 1/2000. Immunohistochemistry: 1/100 - 1/300. ELISA: 1/40000. Not yet tested in other applications. IHC-P~~N/A
Format	Liquid in PBS containing 50% glycerol, 0.5% BSA and 0.09% (W/V) sodium azide.
Storage Conditions	-20°C

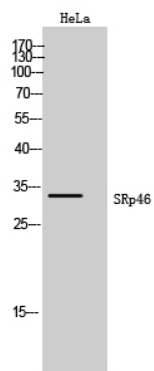
Protein Information

Name	SRSF8
Synonyms	SFRS2B, SRP46
Function	Involved in pre-mRNA alternative splicing.
Cellular Location	Nucleus.
Tissue Location	Strongly expressed in pancreas, spleen and prostate. Weakly expressed in lung, liver and thymus

Background

Involved in pre-mRNA alternative splicing.

Images



Western Blot analysis of HeLa cells using SRp46
Polyclonal Antibody cells nucleus extracted by Minute TM
Cytoplasmic and Nuclear Fractionation kit
(SC-003, Inventbiotech, MN, USA).

Please note: All products are 'FOR RESEARCH USE ONLY. NOT FOR USE IN DIAGNOSTIC OR THERAPEUTIC PROCEDURES'.