

SRp75 Polyclonal Antibody

Catalog # AP72604

Product Information

Application	WB, IHC-P
Primary Accession	Q08170
Reactivity	Human, Mouse
Host	Rabbit
Clonality	Polyclonal
Calculated MW	56678

Additional Information

Gene ID	6429
Other Names	SRSF4; SFRS4; SRP75; Serine/arginine-rich splicing factor 4; Pre-mRNA-splicing factor SRP75; SRP001LB; Splicing factor; arginine/serine-rich 4
Dilution	WB~~Western Blot: 1/500 - 1/2000. Immunohistochemistry: 1/100 - 1/300. ELISA: 1/20000. Not yet tested in other applications. IHC-P~~N/A
Format	Liquid in PBS containing 50% glycerol, 0.5% BSA and 0.09% (W/V) sodium azide.
Storage Conditions	-20°C

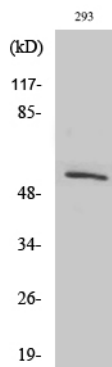
Protein Information

Name	SRSF4
Synonyms	SFRS4, SRP75
Function	Plays a role in alternative splice site selection during pre- mRNA splicing. Represses the splicing of MAPT/Tau exon 10.
Cellular Location	Nucleus speckle.

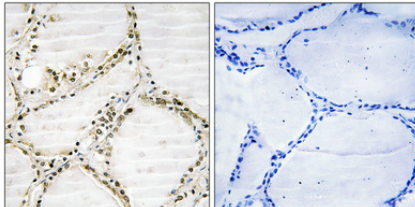
Background

Plays a role in alternative splice site selection during pre-mRNA splicing. Represses the splicing of MAPT/Tau exon 10.

Images



Western Blot analysis of various cells using SRp75 Polyclonal Antibody diluted at 1 : 1000 cells nucleus extracted by Minute TM Cytoplasmic and Nuclear Fractionation kit (SC-003, Invent biotech, MN, USA).



Immunohistochemical analysis of paraffin-embedded Human thyroid gland. Antibody was diluted at 1:100(4°, overnight). High-pressure and temperature Tris-EDTA, pH 8.0 was used for antigen retrieval. Negative control (right) obtained from antibody was pre-absorbed by immunogen peptide.

Please note: All products are 'FOR RESEARCH USE ONLY. NOT FOR USE IN DIAGNOSTIC OR THERAPEUTIC PROCEDURES'.