

ST5 Polyclonal Antibody

Catalog # AP72615

Product Information

Application	WB
Primary Accession	P78524
Reactivity	Human, Mouse
Host	Rabbit
Clonality	Polyclonal
Calculated MW	126485

Additional Information

Gene ID	6764
Other Names	ST5; DENND2B; HTS1; Suppression of tumorigenicity 5 protein; DENN domain-containing protein 2B; HeLa tumor suppression 1
Dilution	WB~~Western Blot: 1/500 - 1/2000. ELISA: 1/20000. Not yet tested in other applications.
Format	Liquid in PBS containing 50% glycerol, 0.5% BSA and 0.09% (W/V) sodium azide.
Storage Conditions	-20°C

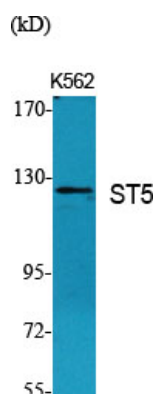
Protein Information

Name	DENND2B (HGNC:11350)
Function	[Isoform 1]: May be involved in cytoskeletal organization and tumorigenicity. Seems to be involved in a signaling transduction pathway leading to activation of MAPK1/ERK2. Plays a role in EGFR trafficking from recycling endosomes back to the cell membrane (PubMed: 29030480).
Cellular Location	[Isoform 1]: Cytoplasm, cell cortex. Cell membrane. Recycling endosome. Note=Colocalizes with RAB13 and ITSN1 at cytoplasmic vesicles that are most likely recycling endosomes Colocalizes with the cortical actin cytoskeleton
Tissue Location	Widely expressed with the exception of peripheral blood lymphocytes. Isoform 1 is expressed in several epithelial and fibroblast (including tumorigenic) but absent in lymphoid cell lines (at protein level). Isoform 3 is expressed in primary cell or weakly tumorigenic but not in tumorigenic cell lines (at protein level)

Background

Isoform 1: May be involved in cytoskeletal organization and tumorigenicity. Seems to be involved in a signaling transduction pathway leading to activation of MAPK1/ERK2. Plays a role in EGFR trafficking from recycling endosomes back to the cell membrane (PubMed:[29030480](#)).

Images



Western Blot analysis of various cells using ST5 Polyclonal Antibody



Western Blot analysis of COLO205 cells using ST5 Polyclonal Antibody

Please note: All products are 'FOR RESEARCH USE ONLY. NOT FOR USE IN DIAGNOSTIC OR THERAPEUTIC PROCEDURES'.