

StARD10 Polyclonal Antibody

Catalog # AP72620

Product Information

Application	WB
Primary Accession	Q9Y365
Reactivity	Human, Mouse, Rat
Host	Rabbit
Clonality	Polyclonal
Calculated MW	33049

Additional Information

Gene ID	10809
Other Names	STARD10; SDCCAG28; CGI-52; PCTP-like protein; PCTP-L; Antigen NY-CO-28; START domain-containing protein 10; StARD10; Serologically defined colon cancer antigen 28; StAR-related lipid transfer protein 10
Dilution	WB~~Western Blot: 1/500 - 1/2000. ELISA: 1/40000. Not yet tested in other applications.
Format	Liquid in PBS containing 50% glycerol, 0.5% BSA and 0.09% (W/V) sodium azide.
Storage Conditions	-20°C

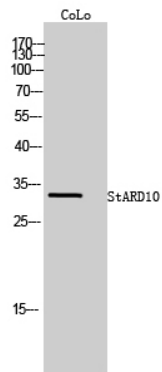
Protein Information

Name	STARD10
Synonyms	SDCCAG28
Function	May play metabolic roles in sperm maturation or fertilization (By similarity). Phospholipid transfer protein that preferentially selects lipid species containing a palmitoyl or stearoyl chain on the sn-1 and an unsaturated fatty acyl chain (18:1 or 18:2) on the sn-2 position. Able to transfer phosphatidylcholine (PC) and phosphatidylethanolamine (PE) between membranes.
Cellular Location	Cell projection, cilium, flagellum. Cytoplasm. Membrane. Note=In testis was predominantly detected at the flagella of elongated spermatids, with a strong signal also found at the tail of epididymal sperm (By similarity). Mainly cytosolic.

Background

May play metabolic roles in sperm maturation or fertilization (By similarity). Phospholipid transfer protein that preferentially selects lipid species containing a palmitoyl or stearoyl chain on the sn-1 and an unsaturated fatty acyl chain (18:1 or 18:2) on the sn-2 position. Able to transfer phosphatidylcholine (PC) and phosphatidylethanolamine (PE) between membranes.

Images



Western Blot analysis of CoLo cells using StARD10 Polyclonal Antibody

Please note: All products are 'FOR RESEARCH USE ONLY. NOT FOR USE IN DIAGNOSTIC OR THERAPEUTIC PROCEDURES'.