

Stat5a Polyclonal Antibody

Catalog # AP72634

Product Information

Application	WB, IF
Primary Accession	P42229
Reactivity	Human, Mouse, Rat
Host	Rabbit
Clonality	Polyclonal
Calculated MW	90647

Additional Information

Gene ID	6776
Other Names	STAT5A; STAT5; Signal transducer and activator of transcription 5A
Dilution	WB~~Western Blot: 1/500 - 1/2000. Immunofluorescence: 1/200 - 1/1000. ELISA: 1/5000. Not yet tested in other applications. IF~~1:50~200
Format	Liquid in PBS containing 50% glycerol, 0.5% BSA and 0.09% (W/V) sodium azide.
Storage Conditions	-20°C

Protein Information

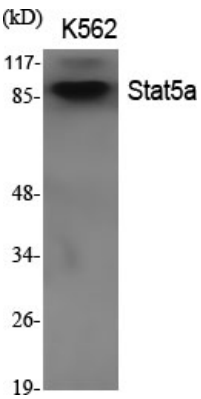
Name	STAT5A
Synonyms	STAT5
Function	Carries out a dual function: signal transduction and activation of transcription. Mediates cellular responses to the cytokine KITLG/SCF and other growth factors. Mediates cellular responses to ERBB4. May mediate cellular responses to activated FGFR1, FGFR2, FGFR3 and FGFR4. Binds to the GAS element and activates PRL- induced transcription. Regulates the expression of milk proteins during lactation.
Cellular Location	Cytoplasm. Nucleus. Note=Translocated into the nucleus in response to phosphorylation

Background

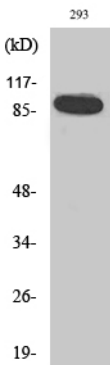
Carries out a dual function: signal transduction and activation of transcription. Mediates cellular responses to the cytokine KITLG/SCF and other growth factors. Mediates cellular responses to ERBB4. May mediate cellular responses to activated FGFR1, FGFR2, FGFR3 and FGFR4. Binds to the GAS element and activates

PRL-induced transcription. Regulates the expression of milk proteins during lactation.

Images



Western Blot analysis of various cells using Stat5a Polyclonal Antibody



Western Blot analysis of 293 cells using Stat5a Polyclonal Antibody

Please note: All products are 'FOR RESEARCH USE ONLY. NOT FOR USE IN DIAGNOSTIC OR THERAPEUTIC PROCEDURES'.