

# Strad Polyclonal Antibody

Catalog # AP72647

## Product Information

---

Application	WB, IHC-P
Primary Accession	<a href="#">Q7RTN6</a>
Reactivity	Human, Mouse
Host	Rabbit
Clonality	Polyclonal
Calculated MW	48369

## Additional Information

---

Gene ID	92335
Other Names	STRADA; LYK5; STRAD; STE20-related kinase adapter protein alpha; STRAD alpha; STE20-related adapter protein; Serologically defined breast cancer antigen NY-BR-96
Dilution	WB~~Western Blot: 1/500 - 1/2000. Immunohistochemistry: 1/100 - 1/300. ELISA: 1/10000. Not yet tested in other applications. IHC-P~~N/A
Format	Liquid in PBS containing 50% glycerol, 0.5% BSA and 0.09% (W/V) sodium azide.
Storage Conditions	-20°C

## Protein Information

---

Name	STRADA
Synonyms	LYK5 {ECO:0000312 EMBL:AAP42280.1}, STRA
Function	Pseudokinase which, in complex with CAB39/MO25 (CAB39/MO25alpha or CAB39L/MO25beta), binds to and activates STK11/LKB1. Adopts a closed conformation typical of active protein kinases and binds STK11/LKB1 as a pseudosubstrate, promoting conformational change of STK11/LKB1 in an active conformation.
Cellular Location	Nucleus. Cytoplasm

## Background

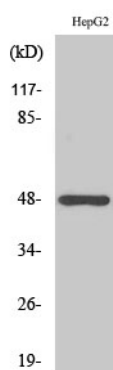
---

Pseudokinase which, in complex with CAB39/MO25 (CAB39/MO25alpha or CAB39L/MO25beta), binds to and activates STK11/LKB1. Adopts a closed conformation typical of active protein kinases and binds STK11/LKB1 as a pseudosubstrate, promoting conformational change of STK11/LKB1 in an active

conformation.

## Images

---



Western Blot analysis of various cells using Strad Polyclonal Antibody

Please note: All products are 'FOR RESEARCH USE ONLY. NOT FOR USE IN DIAGNOSTIC OR THERAPEUTIC PROCEDURES'.