

# Synaptotagmin XIII Polyclonal Antibody

Catalog # AP72671

## Product Information

---

<b>Application</b>	WB
<b>Primary Accession</b>	<a href="#">Q7L8C5</a>
<b>Reactivity</b>	Human, Mouse, Rat
<b>Host</b>	Rabbit
<b>Clonality</b>	Polyclonal
<b>Calculated MW</b>	46885

## Additional Information

---

<b>Gene ID</b>	57586
<b>Other Names</b>	SYT13; KIAA1427; Synaptotagmin-13; Synaptotagmin XIII; SytXIII
<b>Dilution</b>	WB~~Western Blot: 1/500 - 1/2000. ELISA: 1/10000. Not yet tested in other applications.
<b>Format</b>	Liquid in PBS containing 50% glycerol, 0.5% BSA and 0.09% (W/V) sodium azide.
<b>Storage Conditions</b>	-20°C

## Protein Information

---

<b>Name</b>	SYT13
<b>Synonyms</b>	KIAA1427
<b>Function</b>	May be involved in transport vesicle docking to the plasma membrane.
<b>Cellular Location</b>	Membrane; Single-pass membrane protein
<b>Tissue Location</b>	Expressed in brain, pancreas and kidney.

## Background

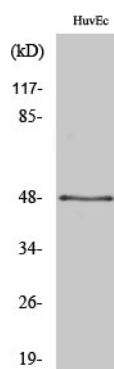
---

May be involved in transport vesicle docking to the plasma membrane.

## Images

---

Western Blot analysis of various cells using



## Synaptotagmin XIII Polyclonal Antibody

Please note: All products are 'FOR RESEARCH USE ONLY. NOT FOR USE IN DIAGNOSTIC OR THERAPEUTIC PROCEDURES'.