

# Syndecan-4 Polyclonal Antibody

Catalog # AP72674

## Product Information

---

<b>Application</b>	WB, IHC-P, IF
<b>Primary Accession</b>	<a href="#">P31431</a>
<b>Reactivity</b>	Human, Mouse, Rat
<b>Host</b>	Rabbit
<b>Clonality</b>	Polyclonal
<b>Calculated MW</b>	21642

## Additional Information

---

<b>Gene ID</b>	6385
<b>Other Names</b>	SDC4; Syndecan-4; SYND4; Amphiglycan; Ryudocan core protein
<b>Dilution</b>	WB~~Western Blot: 1/500 - 1/2000. Immunohistochemistry: 1/100 - 1/300. Immunofluorescence: 1/200 - 1/1000. ELISA: 1/40000. Not yet tested in other applications. IHC-P~~N/A IF~~1:50~200
<b>Format</b>	Liquid in PBS containing 50% glycerol, 0.5% BSA and 0.09% (W/V) sodium azide.
<b>Storage Conditions</b>	-20°C

## Protein Information

---

<b>Name</b>	SDC4 ( <a href="#">HGNC:10661</a> )
<b>Function</b>	Cell surface proteoglycan which regulates exosome biogenesis in concert with SDCBP and PDCD6IP (PubMed: <a href="#">22660413</a> ).
<b>Cellular Location</b>	[Isoform 1]: Membrane; Single-pass type I membrane protein. Secreted. Note=Shedding of the ectodomain produces a soluble form.
<b>Tissue Location</b>	Detected in fibroblasts (at protein level) (PubMed:1500433, PubMed:36213313). Also expressed in epithelial cells (PubMed:1500433).

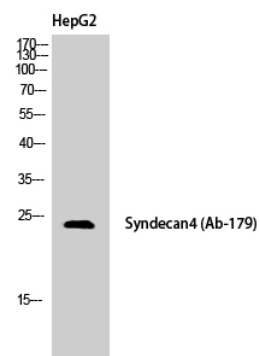
## Background

---

Cell surface proteoglycan that bears heparan sulfate. Regulates exosome biogenesis in concert with SDCBP and PDCD6IP (PubMed:[22660413](#)).

## Images

---



Western Blot analysis of HepG2 cells using Syndecan-4 Polyclonal Antibody

Please note: All products are 'FOR RESEARCH USE ONLY. NOT FOR USE IN DIAGNOSTIC OR THERAPEUTIC PROCEDURES'.