

Synphilin-1 Polyclonal Antibody

Catalog # AP72675

Product Information

Application	WB, IHC-P
Primary Accession	Q9Y6H5
Reactivity	Human, Mouse
Host	Rabbit
Clonality	Polyclonal
Calculated MW	100409

Additional Information

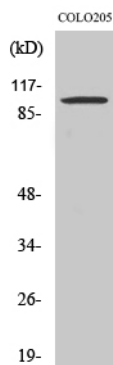
Gene ID	9627
Other Names	SNCAIP; Synphilin-1; Sph1; Alpha-synuclein-interacting protein
Dilution	WB~~Western Blot: 1/500 - 1/2000. Immunohistochemistry: 1/100 - 1/300. ELISA: 1/10000. Not yet tested in other applications. IHC-P~~N/A
Format	Liquid in PBS containing 50% glycerol, 0.5% BSA and 0.09% (W/V) sodium azide.
Storage Conditions	-20°C

Protein Information

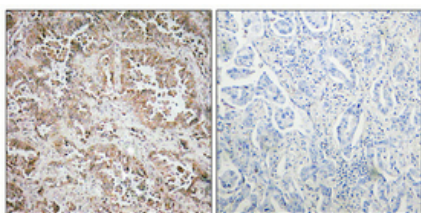
Name	SNCAIP
Function	Isoform 2 inhibits the ubiquitin ligase activity of SIAH1 and inhibits proteasomal degradation of target proteins. Isoform 2 inhibits autoubiquitination and proteasomal degradation of SIAH1, and thereby increases cellular levels of SIAH. Isoform 2 modulates SNCA monoubiquitination by SIAH1.
Cellular Location	Cytoplasm. Note=Detected in cytoplasmic inclusion bodies, together with SNCA
Tissue Location	Detected in brain (at protein level). Widely expressed, with highest levels in brain, heart and placenta

Background

Isoform 2 inhibits the ubiquitin ligase activity of SIAH1 and inhibits proteasomal degradation of target proteins. Isoform 2 inhibits autoubiquitination and proteasomal degradation of SIAH1, and thereby increases cellular levels of SIAH. Isoform 2 modulates SNCA monoubiquitination by SIAH1.



Western Blot analysis of various cells using Synphilin-1 Polyclonal Antibody



Immunohistochemical analysis of paraffin-embedded Human lung cancer. Antibody was diluted at 1:100(4°,overnight). High-pressure and temperature Tris-EDTA,pH8.0 was used for antigen retrieval. Negative contrl (right) obtaned from antibody was pre-absorbed by immunogen peptide.

Please note: All products are 'FOR RESEARCH USE ONLY. NOT FOR USE IN DIAGNOSTIC OR THERAPEUTIC PROCEDURES'.