

# TACC1 Polyclonal Antibody

Catalog # AP72704

## Product Information

---

<b>Application</b>	WB, IHC-P, IF
<b>Primary Accession</b>	<a href="#">O75410</a>
<b>Reactivity</b>	Human, Mouse
<b>Host</b>	Rabbit
<b>Clonality</b>	Polyclonal
<b>Calculated MW</b>	87794

## Additional Information

---

<b>Gene ID</b>	6867
<b>Other Names</b>	TACC1; KIAA1103; Transforming acidic coiled-coil-containing protein 1; Gastric cancer antigen Ga55; Taxin-1
<b>Dilution</b>	WB~~Western Blot: 1/500 - 1/2000. Immunohistochemistry: 1/100 - 1/300. Immunofluorescence: 1/200 - 1/1000. ELISA: 1/10000. Not yet tested in other applications. IHC-P~~N/A IF~~1:50~200
<b>Format</b>	Liquid in PBS containing 50% glycerol, 0.5% BSA and 0.09% (W/V) sodium azide.
<b>Storage Conditions</b>	-20°C

## Protein Information

---

<b>Name</b>	TACC1
<b>Synonyms</b>	KIAA1103
<b>Function</b>	Involved in transcription regulation induced by nuclear receptors, including in T3 thyroid hormone and all-trans retinoic acid pathways (PubMed: <a href="#">20078863</a> ). Might promote the nuclear localization of the receptors (PubMed: <a href="#">20078863</a> ). Likely involved in the processes that promote cell division prior to the formation of differentiated tissues.
<b>Cellular Location</b>	Cytoplasm. Nucleus. Cytoplasm, cytoskeleton, microtubule organizing center, centrosome. Midbody. Note=Nucleus during interphase. Weakly concentrated at centrosomes during mitosis and colocalizes with AURKC at the midbody during cytokinesis. [Isoform 10]: Cytoplasm
<b>Tissue Location</b>	Isoform 1, isoform 3 and isoform 5 are ubiquitous. Isoform 2 is strongly expressed in the brain, weakly detectable in lung and colon, and overexpressed in gastric cancer. Isoform 4 is not detected in normal tissues,

but strong expression was found in gastric cancer tissues. Down-regulated in a subset of cases of breast cancer

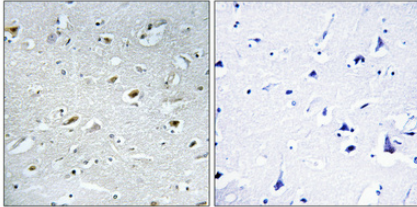
## Background

---

Likely involved in the processes that promote cell division prior to the formation of differentiated tissues.

## Images

---



Immunohistochemical analysis of paraffin-embedded Human brain. Antibody was diluted at 1:100(4°,overnight). High-pressure and temperature Tris-EDTA,pH8.0 was used for antigen retrieval. Negative contrl (right) obtained from antibody was pre-absorbed by immunogen peptide.

Please note: All products are 'FOR RESEARCH USE ONLY. NOT FOR USE IN DIAGNOSTIC OR THERAPEUTIC PROCEDURES'.