

# TAF II p68 Polyclonal Antibody

Catalog # AP72713

## Product Information

---

Application	WB, IHC-P
Primary Accession	<a href="#">Q92804</a>
Reactivity	Human, Mouse
Host	Rabbit
Clonality	Polyclonal
Calculated MW	61830

## Additional Information

---

Gene ID	8148
Other Names	TAF15; RBP56; TAF2N; TATA-binding protein-associated factor 2N; 68 kDa TATA-binding protein-associated factor; TAF(II)68; TAFII68; RNA-binding protein 56
Dilution	WB~~Western Blot: 1/500 - 1/2000. Immunohistochemistry: 1/100 - 1/300. ELISA: 1/5000. Not yet tested in other applications. IHC-P~~N/A
Format	Liquid in PBS containing 50% glycerol, 0.5% BSA and 0.09% (W/V) sodium azide.
Storage Conditions	-20°C

## Protein Information

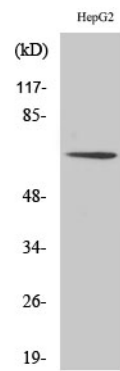
---

Name	TAF15
Synonyms	RBP56, TAF2N
Function	RNA and ssDNA-binding protein that may play specific roles during transcription initiation at distinct promoters. Binds to ssRNA containing the consensus sequence 5'-AGGUAA-3' (PubMed: <a href="#">21256132</a> ). Can enter the preinitiation complex together with the RNA polymerase II (Pol II).
Cellular Location	Nucleus. Cytoplasm. Note=Shuttles from the nucleus to the cytoplasm
Tissue Location	Ubiquitous. Observed in all fetal and adult tissues

## Background

---

RNA and ssDNA-binding protein that may play specific roles during transcription initiation at distinct promoters. Can enter the preinitiation complex together with the RNA polymerase II (Pol II).



Western Blot analysis of various cells using TAF II p68 Polyclonal Antibody

Please note: All products are 'FOR RESEARCH USE ONLY. NOT FOR USE IN DIAGNOSTIC OR THERAPEUTIC PROCEDURES'.