

NP1(Nptx1) Antibody (C-term)

Purified Rabbit Polyclonal Antibody (Pab)

Catalog # AP7272b

Product Information

Application	WB, IHC-P, E
Primary Accession	P47971
Other Accession	Q62443 , Q15818
Reactivity	Human, Rat
Predicted	Mouse
Host	Rabbit
Clonality	Polyclonal
Isotype	Rabbit IgG
Clone Names	RB8973
Calculated MW	47216
Antigen Region	364-393

Additional Information

Gene ID	266777
Other Names	Neuronal pentraxin-1, NP1, 47 kDa taipoxin-binding protein, Neuronal pentraxin I, NP-I, Nptx1
Target/Specificity	This NP1(Nptx1) antibody is generated from rabbits immunized with a KLH conjugated synthetic peptide between 364-393 amino acids from the C-terminal region of human NP1(Nptx1).
Dilution	WB~~1:1000 IHC-P~~1:100~500 E~~Use at an assay dependent concentration.
Format	Purified monoclonal antibody supplied in PBS with 0.09% (W/V) sodium azide. This antibody is purified through a protein G column, followed by dialysis against PBS.
Storage	Maintain refrigerated at 2-8°C for up to 2 weeks. For long term storage store at -20°C in small aliquots to prevent freeze-thaw cycles.
Precautions	NP1(Nptx1) Antibody (C-term) is for research use only and not for use in diagnostic or therapeutic procedures.

Protein Information

Name	Nptx1
Function	May be involved in mediating uptake of synaptic material during synapse remodeling or in mediating the synaptic clustering of AMPA glutamate

receptors at a subset of excitatory synapses.

Cellular Location

Secreted {ECO:0000250|UniProtKB:Q15818}. Cytoplasmic vesicle, secretory vesicle. Endoplasmic reticulum

Tissue Location

Cerebellum, hippocampus and cerebral cortex.

Background

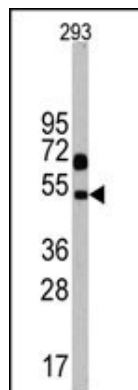
NPTX1 is a member of the neuronal pentraxin gene family. Human neuronal pentraxin 1 is similar to the rat NP1 gene which encodes a binding protein for the snake venom toxin taipoxin.

References

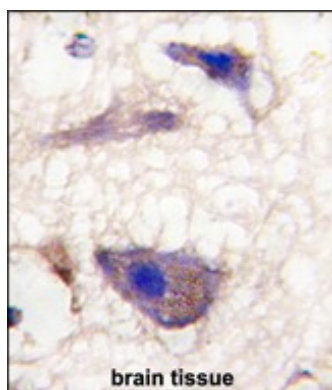
Hossain,M.A., J. Neurosci. 24 (17), 4187-4196 (2004)

Schlimgen,A.K., Neuron 14 (3), 519-526 (1995)

Images



Western blot analysis of Nptx1 Antibody (C-term) in 293 cell line lysates (35ug/lane). Nptx1 (arrow) was detected using the purified Pab.



Formalin-fixed and paraffin-embedded human brain tissue reacted with Nptx1 Antibody (C-term), which was peroxidase-conjugated to the secondary antibody, followed by DAB staining. This data demonstrates the use of this antibody for immunohistochemistry; clinical relevance has not been evaluated.

Please note: All products are 'FOR RESEARCH USE ONLY. NOT FOR USE IN DIAGNOSTIC OR THERAPEUTIC PROCEDURES'.