

TBPL2 Polyclonal Antibody

Catalog # AP72746

Product Information

Application	WB, IHC-P, IF, ICC, E
Primary Accession	Q6SJ96
Reactivity	Human, Rat, Mouse
Host	Rabbit
Clonality	Polyclonal
Calculated MW	38035

Additional Information

Gene ID	387332
Other Names	TBPL2; TBP2; TRF3; TATA box-binding protein-like protein 2; TBP-like protein 2; TATA box-binding protein-related factor 3; TBP-related factor 3
Dilution	WB~~Western Blot: 1/500 - 1/2000. Immunohistochemistry: 1/100 - 1/300. ELISA: 1/5000. Not yet tested in other applications. IHC-P~~N/A IF~~1:50~200 ICC~~N/A E~~N/A
Format	Liquid in PBS containing 50% glycerol, 0.5% BSA and 0.09% (W/V) sodium azide.
Storage Conditions	-20°C

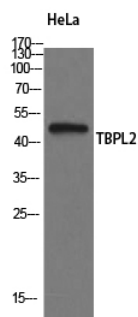
Protein Information

Name	TBPL2 {ECO:0000312 EMBL:AAI17186.1, ECO:0000312 HGNC:HGNC:19841}
Function	Transcription factor required in complex with TAF3 for the differentiation of myoblasts into myocytes. The complex replaces TFIID at specific promoters at an early stage in the differentiation process (By similarity).
Cellular Location	Cytoplasm. Nucleus. Note=Present in the cytoplasm during cytokinesis.
Tissue Location	Ubiquitously expressed in all tissues examined with highest levels in heart, lung, ovary, spleen and testes

Background

Transcription factor required in complex with TAF3 for the differentiation of myoblasts into myocytes. The complex replaces TFIID at specific promoters at an early stage in the differentiation process (By similarity).

Images



Western Blot analysis of HeLa cells using TBPL2 Polyclonal Antibody

Please note: All products are 'FOR RESEARCH USE ONLY. NOT FOR USE IN DIAGNOSTIC OR THERAPEUTIC PROCEDURES'.