

# TCP-1 $\epsilon$ Polyclonal Antibody

Catalog # AP72767

## Product Information

---

Application	WB
Primary Accession	<a href="#">P48643</a>
Reactivity	Human, Mouse, Rat
Host	Rabbit
Clonality	Polyclonal
Calculated MW	59671

## Additional Information

---

Gene ID	22948
Other Names	CCT5; CCTE; KIAA0098; T-complex protein 1 subunit epsilon; TCP-1-epsilon; CCT-epsilon
Dilution	WB~~Western Blot: 1/500 - 1/2000. ELISA: 1/10000. Not yet tested in other applications.
Format	Liquid in PBS containing 50% glycerol, 0.5% BSA and 0.09% (W/V) sodium azide.
Storage Conditions	-20°C

## Protein Information

---

Name	CCT5
Synonyms	CCTE, KIAA0098 {ECO:0000303 PubMed:77885}
Function	Component of the chaperonin-containing T-complex (TRiC), a molecular chaperone complex that assists the folding of actin, tubulin and other proteins upon ATP hydrolysis (PubMed: <a href="#">25467444</a> , PubMed: <a href="#">36493755</a> , PubMed: <a href="#">35449234</a> , PubMed: <a href="#">37193829</a> ). The TRiC complex mediates the folding of WRAP53/TCAB1, thereby regulating telomere maintenance (PubMed: <a href="#">25467444</a> ). As part of the TRiC complex may play a role in the assembly of BBSome, a complex involved in ciliogenesis regulating transports vesicles to the cilia (PubMed: <a href="#">20080638</a> ).
Cellular Location	Cytoplasm. Cytoplasm, cytoskeleton, microtubule organizing center, centrosome

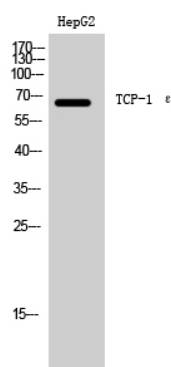
## Background

---

Component of the chaperonin-containing T-complex (TRiC), a molecular chaperone complex that assists the folding of proteins upon ATP hydrolysis (PubMed:[25467444](#)). The TRiC complex mediates the folding of WRAP53/TCAB1, thereby regulating telomere maintenance (PubMed:[25467444](#)). As part of the TRiC complex may play a role in the assembly of BBSome, a complex involved in ciliogenesis regulating transports vesicles to the cilia (PubMed:[20080638](#)). The TRiC complex plays a role in the folding of actin and tubulin (Probable).

## Images

---



Western Blot analysis of HepG2 cells using TCP-1 ε Polyclonal Antibody

Please note: All products are 'FOR RESEARCH USE ONLY. NOT FOR USE IN DIAGNOSTIC OR THERAPEUTIC PROCEDURES'.