

TDE1 Polyclonal Antibody

Catalog # AP72774

Product Information

Application	WB, IHC-P, IF
Primary Accession	Q13530
Reactivity	Human, Mouse, Rat
Host	Rabbit
Clonality	Polyclonal
Calculated MW	52580

Additional Information

Gene ID	10955
Other Names	SERINC3; DIFF33; TDE1; SBBI99; Serine incorporator 3; Tumor differentially expressed protein 1
Dilution	WB~~Western Blot: 1/500 - 1/2000. Immunohistochemistry: 1/100 - 1/300. Immunofluorescence: 1/200 - 1/1000. ELISA: 1/20000. Not yet tested in other applications. IHC-P~~N/A IF~~1:50~200
Format	Liquid in PBS containing 50% glycerol, 0.5% BSA and 0.09% (W/V) sodium azide.
Storage Conditions	-20°C

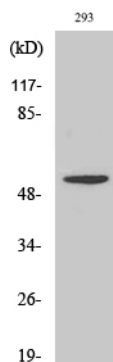
Protein Information

Name	SERINC3 (HGNC:11699)
Function	Restriction factor required to restrict infectivity of lentiviruses, such as HIV-1: acts by inhibiting an early step of viral infection. Impairs the penetration of the viral particle into the cytoplasm (PubMed: 26416733 , PubMed: 26416734). Non-ATP-dependent, non- specific lipid transporter for phosphatidylserine, phosphatidylcholine, and phosphatidylethanolamine. Functions as a scramblase that flips lipids in both directions across the membrane. Phospholipid scrambling results in HIV-1 surface exposure of phosphatidylserine and loss of membrane asymmetry, which leads to changes in HIV-1 Env conformation and loss of infectivity (PubMed: 37474505).
Cellular Location	Cell membrane; Multi-pass membrane protein. Golgi apparatus membrane {ECO:0000250 UniProtKB:Q9QZI9}; Multi-pass membrane protein {ECO:0000250 UniProtKB:Q9QZI9}
Tissue Location	Ubiquitous. Expression levels were increased fourfold to tenfold in lung tumor tissues compared with normal pulmonary tissues.

Background

Restriction factor required to restrict infectivity of lentiviruses, such as HIV-1: acts by inhibiting an early step of viral infection. Impairs the penetration of the viral particle into the cytoplasm (PubMed:[26416733](#), PubMed:[26416734](#)).

Images



Western Blot analysis of various cells using TDE1 Polyclonal Antibody

Please note: All products are 'FOR RESEARCH USE ONLY. NOT FOR USE IN DIAGNOSTIC OR THERAPEUTIC PROCEDURES'.