

TDE2L Polyclonal Antibody

Catalog # AP72775

Product Information

Application	WB, IHC-P, IF
Primary Accession	Q96SA4
Reactivity	Human, Mouse, Rat
Host	Rabbit
Clonality	Polyclonal
Calculated MW	50742

Additional Information

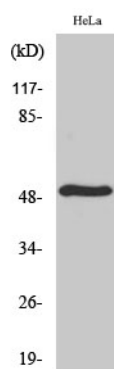
Gene ID	347735
Other Names	SERINC2; TDE2L; FKSG84; Serine incorporator 2; Tumor differentially expressed protein 2-like
Dilution	WB~~Western Blot: 1/500 - 1/2000. Immunohistochemistry: 1/100 - 1/300. Immunofluorescence: 1/200 - 1/1000. ELISA: 1/40000. Not yet tested in other applications. IHC-P~~N/A IF~~1:50~200
Format	Liquid in PBS containing 50% glycerol, 0.5% BSA and 0.09% (W/V) sodium azide.
Storage Conditions	-20°C

Protein Information

Name	SERINC2 (HGNC:23231)
Synonyms	TDE2L
Function	Non-ATP-dependent, non-specific lipid transporter for phosphatidylserine, phosphatidylcholine, and phosphatidylethanolamine. Functions as a scramblase that flips lipids in both directions across the membrane. In contrast to SERINC3 and SERINC5, has no effect on HIV- 1 particles infectivity.
Cellular Location	Cell membrane; Multi-pass membrane protein

Images

Western Blot analysis of various cells using TDE2L Polyclonal Antibody



Please note: All products are 'FOR RESEARCH USE ONLY. NOT FOR USE IN DIAGNOSTIC OR THERAPEUTIC PROCEDURES'.