

Tensin-1 Polyclonal Antibody

Catalog # AP72786

Product Information

Application	WB
Primary Accession	Q9HBL0
Reactivity	Human, Mouse
Host	Rabbit
Clonality	Polyclonal
Calculated MW	197023

Additional Information

Gene ID	7145
Other Names	TNS1; TNS; Tensin-1
Dilution	WB~~Western Blot: 1/500 - 1/2000. ELISA: 1/10000. Not yet tested in other applications.
Format	Liquid in PBS containing 50% glycerol, 0.5% BSA and 0.09% (W/V) sodium azide.
Storage Conditions	-20°C

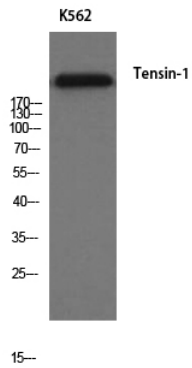
Protein Information

Name	TNS1
Synonyms	TNS
Function	May act as a protein phosphatase and/or a lipid phosphatase (Probable). Involved in fibrillar adhesion formation (PubMed: 21768292 , PubMed: 28005397). Essential for myofibroblast differentiation and myofibroblast-mediated extracellular matrix deposition (PubMed: 28005397). Enhances RHOA activation in the presence of DLC1 (PubMed: 26427649). Plays a role in cell polarization and migration (PubMed: 19826001). May be involved in cartilage development and in linking signal transduction pathways to the cytoskeleton (PubMed: 21768292).
Cellular Location	Cell surface. Cell junction, focal adhesion. Cytoplasm, cytoskeleton. Note=Localizes to both focal adhesions and fibrillar adhesions (PubMed:20069572). Localized at the cell periphery preferentially to fibrillar adhesions rather than to focal adhesions. Translocates from the cell edge to the cell center in an ITGB1BP1-dependent manner (PubMed:21768292)
Tissue Location	In the lung, detected in the alveolar septa (at protein level)

Background

Involved in fibrillar adhesion formation. May be involved in cell migration, cartilage development and in linking signal transduction pathways to the cytoskeleton.

Images



Western Blot analysis of K562 cells using Tensin-1 Polyclonal Antibody

Please note: All products are 'FOR RESEARCH USE ONLY. NOT FOR USE IN DIAGNOSTIC OR THERAPEUTIC PROCEDURES'.