

EN1 (Engrailed 1) Antibody (Center)

Purified Rabbit Polyclonal Antibody (Pab)

Catalog # AP7278C

Product Information

Application	WB, E
Primary Accession	Q05925
Reactivity	Human, Mouse
Host	Rabbit
Clonality	Polyclonal
Isotype	Rabbit IgG
Clone Names	RB14104
Calculated MW	40115
Antigen Region	125-155

Additional Information

Gene ID	2019
Other Names	Homeobox protein engrailed-1, Homeobox protein en-1, Hu-En-1, EN1
Target/Specificity	This EN1 (Engrailed 1) antibody is generated from rabbits immunized with a KLH conjugated synthetic peptide between 125-155 amino acids from the Central region of human EN1 (Engrailed 1).
Dilution	WB~~1:1000 E~~Use at an assay dependent concentration.
Format	Purified polyclonal antibody supplied in PBS with 0.09% (W/V) sodium azide. This antibody is prepared by Saturated Ammonium Sulfate (SAS) precipitation followed by dialysis against PBS.
Storage	Maintain refrigerated at 2-8°C for up to 2 weeks. For long term storage store at -20°C in small aliquots to prevent freeze-thaw cycles.
Precautions	EN1 (Engrailed 1) Antibody (Center) is for research use only and not for use in diagnostic or therapeutic procedures.

Protein Information

Name	EN1
Function	Required for proper formation of the apical ectodermal ridge and correct dorsal-ventral patterning in the limb.
Cellular Location	Nucleus.

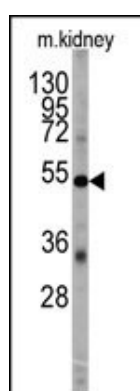
Background

Homeobox-containing genes are thought to have a role in controlling development. In *Drosophila*, the 'engrailed' (en) gene plays an important role during development in segmentation, where it is required for the formation of posterior compartments. Different mutations in the mouse homologs, En1 and En2, produced different developmental defects that frequently are lethal. The human engrailed homologs 1 and 2 encode homeodomain-containing proteins and have been implicated in the control of pattern formation during development of the central nervous system.

References

Bachar-Dahan,L., Mol. Biol. Cell 17 (6), 2572-2580 (2006)
Kohler,A., Genomics 15 (1), 233-235 (1993)

Images



Western blot analysis of anti-EN1 Antibody (Center) (RB14104) in mouse kidney tissue lysates (35ug/lane). EN1(arrow) was detected using the purified Pab.

Citations

- [Engrailed 1 overexpression as a potential prognostic marker in quintuple-negative breast cancer.](#)

Please note: All products are 'FOR RESEARCH USE ONLY. NOT FOR USE IN DIAGNOSTIC OR THERAPEUTIC PROCEDURES'.