

TESK2 Polyclonal Antibody

Catalog # AP72791

Product Information

Application	WB
Primary Accession	Q96S53
Reactivity	Human, Mouse, Rat
Host	Rabbit
Clonality	Polyclonal
Calculated MW	63639

Additional Information

Gene ID	10420
Other Names	TESK2; Dual specificity testis-specific protein kinase 2; Testicular protein kinase 2
Dilution	WB~~Western Blot: 1/500 - 1/2000. ELISA: 1/20000. Not yet tested in other applications.
Format	Liquid in PBS containing 50% glycerol, 0.5% BSA and 0.09% (W/V) sodium azide.
Storage Conditions	-20°C

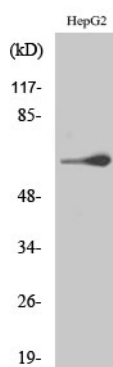
Protein Information

Name	TESK2
Function	Dual specificity protein kinase activity catalyzing autophosphorylation and phosphorylation of exogenous substrates on both serine/threonine and tyrosine residues. Phosphorylates cofilin at 'Ser- 3'. May play an important role in spermatogenesis.
Cellular Location	Nucleus.
Tissue Location	Predominantly expressed in testis and prostate. Found predominantly in non-germinal Sertoli cells

Background

Dual specificity protein kinase activity catalyzing autophosphorylation and phosphorylation of exogenous substrates on both serine/threonine and tyrosine residues. Phosphorylates cofilin at 'Ser-3'. May play an important role in spermatogenesis.

Images



Western Blot analysis of various cells using TESK2 Polyclonal Antibody

Please note: All products are 'FOR RESEARCH USE ONLY. NOT FOR USE IN DIAGNOSTIC OR THERAPEUTIC PROCEDURES'.