

Tetraspanin-8 Polyclonal Antibody

Catalog # AP72792

Product Information

Application	WB, IHC-P, IF
Primary Accession	P19075
Reactivity	Human
Host	Rabbit
Clonality	Polyclonal
Calculated MW	26044

Additional Information

Gene ID	7103
Other Names	TSPAN8; TM4SF3; Tetraspanin-8; Tspan-8; Transmembrane 4 superfamily member 3; Tumor-associated antigen CO-029
Dilution	WB~~Western Blot: 1/500 - 1/2000. Immunohistochemistry: 1/100 - 1/300. Immunofluorescence: 1/200 - 1/1000. ELISA: 1/20000. Not yet tested in other applications. IHC-P~~N/A IF~~1:50~200
Format	Liquid in PBS containing 50% glycerol, 0.5% BSA and 0.09% (W/V) sodium azide.
Storage Conditions	-20°C

Protein Information

Name	TSPAN8
Synonyms	TM4SF3
Function	Structural component of specialized membrane microdomains known as tetraspanin-enriched microdomains (TERMs), which act as platforms for receptor clustering and signaling (PubMed: 27180357 , PubMed: 36078095). Participates thereby in diverse biological functions such as cell signal transduction, migration and protein trafficking (PubMed: 25761241). Promotes ADAM17-mediated TNF-alpha processing through recruitment of ADAM17 to tetraspanin-enriched micro-domains (TEMs) (PubMed: 36078095). Forms a complex with RICTOR and integrin alpha3/ITGA3 to mediate mTORC2 activation and AKT1 phosphorylation leading to cell migration (PubMed: 25761241). Reduces apoptosis and autophagy induced by high glucose levels through forming a complex with mTOR and RICTOR (PubMed: 35904232). Contributes to the maintenance of intestinal epithelial barrier and plays a role in the regulation of intestine inflammation by switching interferon gamma receptor 1/IFNGR1 from clathrin-dependent to

lipid raft-dependent endocytosis route to limit STAT1 activation magnitude and duration (PubMed:[37204469](#)). Acts as a modulator of the endothelin axis by associating with endothelin converting enzyme ECE1 and regulating its activity of conversion of the endothelin-1 precursor to endothelin (PubMed:[37835445](#)).

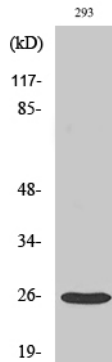
Cellular Location

Cell membrane; Multi-pass membrane protein

Tissue Location

Gastric, colon, rectal, and pancreatic carcinomas.

Images



Western Blot analysis of various cells using Tetraspanin-8 Polyclonal Antibody diluted at 1 : 1000

Please note: All products are 'FOR RESEARCH USE ONLY. NOT FOR USE IN DIAGNOSTIC OR THERAPEUTIC PROCEDURES'.