

# TGF $\alpha$ Polyclonal Antibody

Catalog # AP72809

## Product Information

---

<b>Application</b>	WB, IHC-P
<b>Primary Accession</b>	<a href="#">P01135</a>
<b>Reactivity</b>	Human, Mouse, Rat, Monkey
<b>Host</b>	Rabbit
<b>Clonality</b>	Polyclonal
<b>Calculated MW</b>	17006

## Additional Information

---

<b>Gene ID</b>	7039
<b>Other Names</b>	TGFA; Protransforming growth factor alpha
<b>Dilution</b>	WB~~Western Blot: 1/500 - 1/2000. Immunohistochemistry: 1/100 - 1/300. ELISA: 1/10000. Not yet tested in other applications. IHC-P~~N/A
<b>Format</b>	Liquid in PBS containing 50% glycerol, 0.5% BSA and 0.09% (W/V) sodium azide.
<b>Storage Conditions</b>	-20°C

## Protein Information

---

<b>Name</b>	TGFA
<b>Function</b>	TGF alpha is a mitogenic polypeptide that is able to bind to the EGF receptor/EGFR and to act synergistically with TGF beta to promote anchorage-independent cell proliferation in soft agar.
<b>Cellular Location</b>	[Transforming growth factor alpha]: Secreted, extracellular space
<b>Tissue Location</b>	Isoform 1, isoform 3 and isoform 4 are expressed in keratinocytes and tumor-derived cell lines

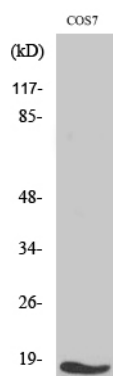
## Background

---

TGF alpha is a mitogenic polypeptide that is able to bind to the EGF receptor/EGFR and to act synergistically with TGF beta to promote anchorage-independent cell proliferation in soft agar.

## Images

---



Western Blot analysis of various cells using TGFα Polyclonal Antibody

Please note: All products are 'FOR RESEARCH USE ONLY. NOT FOR USE IN DIAGNOSTIC OR THERAPEUTIC PROCEDURES'.