

TGF β RIII Polyclonal Antibody

Catalog # AP72813

Product Information

| | |
|-------------------|------------------------|
| Application | WB, IF, ICC, E |
| Primary Accession | Q03167 |
| Reactivity | Human, Mouse, Rat |
| Host | Rabbit |
| Clonality | Polyclonal |
| Calculated MW | 93499 |

Additional Information

| | |
|--------------------|--|
| Gene ID | 7049 |
| Other Names | TGFB3; Transforming growth factor beta receptor type 3; TGF-beta receptor type 3; TGFR-3; Betaglycan; Transforming growth factor beta receptor III; TGF-beta receptor type III |
| Dilution | WB~~Immunohistochemistry: 1/100 - 1/300. ELISA: 1/5000. Not yet tested in other applications. IF~~1:50~200 ICC~~N/A E~~N/A |
| Format | Liquid in PBS containing 50% glycerol, 0.5% BSA and 0.09% (W/V) sodium azide. |
| Storage Conditions | -20°C |

Protein Information

| | |
|----------|--|
| Name | TGFB3 (HGNC:11774) |
| Function | Cell surface receptor that regulates diverse cellular processes including cell proliferation, differentiation, migration, and apoptosis (PubMed: 12958365 , PubMed: 19416857). Initiates BMP, inhibin, and TGF-beta signaling pathways by interacting with different ligands including TGFB1, BMP2, BMP5, BMP7 or GDF5 (PubMed: 18184661). Alternatively, acts as a cell surface coreceptor for BMP ligands, serving to enhance ligand binding by differentially regulating BMPR1A/ALK3 and BMPR1B/ALK6 receptor trafficking (PubMed: 19726563). Promotes epithelial cell adhesion, focal adhesion formation and integrin signaling during epithelial cell spreading on fibronectin (PubMed: 22562249). By interacting with the scaffolding protein beta- arrestin2/ARRB2, regulates migration or actin cytoskeleton and promotes the activation of CDC42 as well as the inhibition of NF-kappa-B (PubMed: 19416857 , PubMed: 19325136). In gonadotrope cells, acts as an inhibin A coreceptor and regulates follicle-stimulating hormone (FSH) levels and female fertility (By similarity). Plays a role in the inhibition of directed and random cell migration in epithelial cells by altering the actin cytoskeletal organization |

(PubMed:[19416857](#)). Participates in epithelial-mesenchymal transformation (EMT) upon binding to BMP2 or TGFB2, by activating the PAR6/SMURF1/RHOA pathway (By similarity).

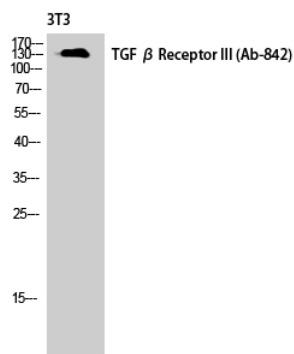
Cellular Location

Cell membrane; Single-pass type I membrane protein. Secreted {ECO:0000250|UniProtKB:P26342}. Secreted, extracellular space, extracellular matrix {ECO:0000250|UniProtKB:P26342}. Note=Exists both as a membrane-bound form and as soluble form in serum and in the extracellular matrix. {ECO:0000250|UniProtKB:P26342}

Background

Binds to TGF-beta. Could be involved in capturing and retaining TGF-beta for presentation to the signaling receptors.

Images



Western Blot analysis of NIH-3T3 cells using TGFβ RIII Polyclonal Antibody diluted at 1 : 1000

Please note: All products are 'FOR RESEARCH USE ONLY. NOT FOR USE IN DIAGNOSTIC OR THERAPEUTIC PROCEDURES'.