

# Thymidine Kinase Polyclonal Antibody

Catalog # AP72831

## Product Information

---

|                   |                        |
|-------------------|------------------------|
| Application       | WB, IHC-P, IF, ICC, E  |
| Primary Accession | <a href="#">P04183</a> |
| Reactivity        | Human, Mouse, Rat      |
| Host              | Rabbit                 |
| Clonality         | Polyclonal             |
| Calculated MW     | 25469                  |

## Additional Information

---

|                    |   |
|--------------------|---|
| Gene ID            | 7083  |
| Other Names        | TK1; Thymidine kinase; cytosolic  |
| Dilution           | WB~~Western Blot: 1/500 - 1/2000. Immunohistochemistry: 1/100 - 1/300. Immunofluorescence: 1/200 - 1/1000. ELISA: 1/5000. Not yet tested in other applications. IHC-P~~N/A IF~~1:50~200 ICC~~N/A E~~N/A |
| Format             | Liquid in PBS containing 50% glycerol, 0.5% BSA and 0.09% (W/V) sodium azide.   |
| Storage Conditions | -20°C   |

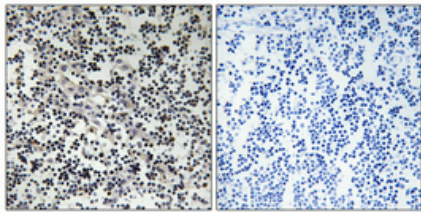
## Protein Information

---

|                   |   |
|-------------------|---|
| Name              | TK1 ( <a href="#">HGNC:11830</a> )  |
| Function          | Cell-cycle-regulated enzyme of importance in nucleotide metabolism (PubMed: <a href="#">9575153</a> ). Catalyzes the first enzymatic step in the salvage pathway converting thymidine into thymidine monophosphate (PubMed: <a href="#">22385435</a> ). Transcriptional regulation limits expression to the S phase of the cell cycle and transient expression coincides with the oscillation in the intracellular dTTP concentration (Probable). Also important for the activation of anticancer and antiviral nucleoside analog prodrugs such as 1-b-d-arabinofuranosylcytosine (AraC) and 3c- azido-3c-deoxythymidine (AZT) (PubMed: <a href="#">22385435</a> ). |
| Cellular Location | Cytoplasm.  |

## Images

---



Immunohistochemical analysis of paraffin-embedded Human lung cancer. Antibody was diluted at 1:100(4°,overnight). High-pressure and temperature Tris-EDTA,pH8.0 was used for antigen retrieval. Negative contrl (right) obtaned from antibody was pre-absorbed by immunogen peptide.

Please note: All products are 'FOR RESEARCH USE ONLY. NOT FOR USE IN DIAGNOSTIC OR THERAPEUTIC PROCEDURES'.