

TIEG2 Polyclonal Antibody

Catalog # AP72836

Product Information

Application	WB, IHC-P, IF
Primary Accession	O14901
Reactivity	Human, Mouse
Host	Rabbit
Clonality	Polyclonal
Calculated MW	55139

Additional Information

Gene ID	8462
Other Names	KLF11; FKLF; TIEG2; Krueppel-like factor 11; Transforming growth factor-beta-inducible early growth response protein 2; TGFB-inducible early growth response protein 2; TIEG-2
Dilution	WB~~Western Blot: 1/500 - 1/2000. Immunohistochemistry: 1/100 - 1/300. Immunofluorescence: 1/200 - 1/1000. ELISA: 1/20000. Not yet tested in other applications. IHC-P~~N/A IF~~1:50~200
Format	Liquid in PBS containing 50% glycerol, 0.5% BSA and 0.09% (W/V) sodium azide.
Storage Conditions	-20°C

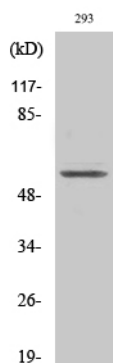
Protein Information

Name	KLF11
Synonyms	FKLF, TIEG2
Function	Transcription factor (PubMed: 10207080 , PubMed: 9748269). Activates the epsilon- and gamma-globin gene promoters and, to a much lower degree, the beta-globin gene and represses promoters containing SP1-like binding inhibiting cell growth (PubMed: 10207080 , PubMed: 16131492 , PubMed: 9748269). Represses transcription of SMAD7 which enhances TGF-beta signaling (By similarity). Induces apoptosis (By similarity).
Cellular Location	Nucleus.
Tissue Location	Ubiquitous. Higher expression in erythroid cells.

Background

Transcription factor (PubMed: [9748269](#), PubMed:[10207080](#)). Activates the epsilon- and gamma-globin gene promoters and, to a much lower degree, the beta-globin gene and represses promoters containing SP1-like binding inhibiting cell growth (PubMed:[9748269](#), PubMed:[10207080](#), PubMed:[16131492](#)). Represses transcription of SMAD7 which enhances TGF-beta signaling (By similarity). Induces apoptosis (By similarity).

Images



Western Blot analysis of various cells using TIEG2 Polyclonal Antibody cells nucleus extracted by Minute TM Cytoplasmic and Nuclear Fractionation kit (SC-003, Invent biotech, MN, USA).

Please note: All products are 'FOR RESEARCH USE ONLY. NOT FOR USE IN DIAGNOSTIC OR THERAPEUTIC PROCEDURES'.