

TIGD1 Polyclonal Antibody

Catalog # AP72838

Product Information

Application	WB
Primary Accession	Q96MW7
Reactivity	Human
Host	Rabbit
Clonality	Polyclonal
Calculated MW	67299

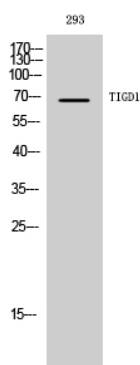
Additional Information

Gene ID	200765
Other Names	TIGD1; Tigger transposable element-derived protein 1
Dilution	WB~~Western Blot: 1/500 - 1/2000. ELISA: 1/10000. Not yet tested in other applications.
Format	Liquid in PBS containing 50% glycerol, 0.5% BSA and 0.09% (W/V) sodium azide.
Storage Conditions	-20°C

Protein Information

Name	TIGD1
Cellular Location	Nucleus.

Images



Western Blot analysis of 293 cells using TIGD1 Polyclonal Antibody diluted at 1 : 500. Secondary antibody was diluted at 1:20000 cells nucleus extracted by Minute TM Cytoplasmic and Nuclear Fractionation kit (SC-003, Invent biotech, MN, USA).

Please note: All products are 'FOR RESEARCH USE ONLY. NOT FOR USE IN DIAGNOSTIC OR THERAPEUTIC PROCEDURES'.