

TIGD3 Polyclonal Antibody

Catalog # AP72839

Product Information

Application	WB, IHC-P, IF, ICC, E
Primary Accession	Q6B0B8
Reactivity	Human, Rat, Mouse
Host	Rabbit
Clonality	Polyclonal
Calculated MW	52027

Additional Information

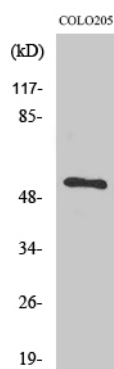
Gene ID	220359
Other Names	TIGD3; Tigger transposable element-derived protein 3
Dilution	WB~~Western Blot: 1/500 - 1/2000. Immunohistochemistry: 1/100 - 1/300. ELISA: 1/40000. Not yet tested in other applications. IHC-P~~N/A IF~~1:50~200 ICC~~N/A E~~N/A
Format	Liquid in PBS containing 50% glycerol, 0.5% BSA and 0.09% (W/V) sodium azide.
Storage Conditions	-20°C

Protein Information

Name	TIGD3
Cellular Location	Nucleus {ECO:0000255 PROSITE-ProRule:PRU00320, ECO:0000255 PROSITE-ProRule:PRU00583}

Images

Western Blot analysis of various cells using TIGD3 Polyclonal Antibody. Secondary antibody was diluted at 1:20000 cells nucleus extracted by Minute TM Cytoplasmic and Nuclear Fractionation kit (SC-003, Invent biotech, MN, USA).



Please note: All products are 'FOR RESEARCH USE ONLY. NOT FOR USE IN DIAGNOSTIC OR THERAPEUTIC PROCEDURES'.