

TMC8 Polyclonal Antibody

Catalog # AP72859

Product Information

Application	WB, IHC-P
Primary Accession	Q8IU68
Reactivity	Human, Mouse, Rat
Host	Rabbit
Clonality	Polyclonal
Calculated MW	81641

Additional Information

Gene ID	147138
Other Names	TMC8; EVER2; EVIN2; Transmembrane channel-like protein 8; Epidermodysplasia verruciformis protein 2
Dilution	WB~~Western Blot: 1/500 - 1/2000. Immunohistochemistry: 1/100 - 1/300. ELISA: 1/5000. Not yet tested in other applications. IHC-P~~N/A
Format	Liquid in PBS containing 50% glycerol, 0.5% BSA and 0.09% (W/V) sodium azide.
Storage Conditions	-20°C

Protein Information

Name	TMC8 (HGNC:20474)
Function	Acts as a regulatory protein involved in the regulation of numerous cellular processes (PubMed: 18158319 , PubMed: 23429285 , PubMed: 30068544 , PubMed: 32917726). Together with its homolog TMC6/EVER1, forms a complex with calcium-binding protein CIB1 in lymphocytes and keratinocytes where TMC6 and TMC8 stabilize CIB1 levels and reciprocally (PubMed: 30068544 , PubMed: 32917726). Together with TMC6, also forms a complex with and activates zinc transporter ZNT1 at the ER membrane of keratinocytes, thereby facilitating zinc uptake into the ER (PubMed: 18158319). Also inhibits receptor-mediated calcium release from ER stores and calcium activated and volume regulated chloride channels (PubMed: 25220380). Down-regulates the activity of transcription factors induced by zinc and cytokines (PubMed: 18158319). Also sequesters TRADD which impairs the recruitment of TRAF2 and RIPK1 in the pro-survival complex I and promotes proapoptotic complex II formation, and may therefore be involved in TNF-induced cell death/survival decisions (PubMed: 23429285).
Cellular Location	Endoplasmic reticulum membrane; Multi-pass membrane protein. Golgi

apparatus membrane; Multi-pass membrane protein. Nucleus membrane; Multi-pass membrane protein. Note=Localizes to the ER, Golgi and nucleus membranes in keratinocytes.

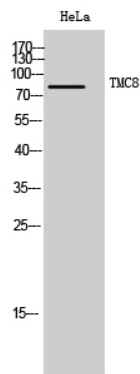
Tissue Location

Expressed in placenta, prostate and testis.

Background

Probable ion channel.

Images



Western Blot analysis of HeLa cells using TMC8 Polyclonal Antibody. Secondary antibody was diluted at 1:20000

Please note: All products are 'FOR RESEARCH USE ONLY. NOT FOR USE IN DIAGNOSTIC OR THERAPEUTIC PROCEDURES'.