

Tollip Polyclonal Antibody

Catalog # AP72878

Product Information

Application	WB, IHC-P, IF, ICC, E
Primary Accession	Q9H0E2
Reactivity	Human, Rat, Mouse
Host	Rabbit
Clonality	Polyclonal
Calculated MW	30282

Additional Information

Gene ID	54472
Other Names	TOLLIP; Toll-interacting protein
Dilution	WB~~Western Blot: 1/500 - 1/2000. Immunohistochemistry: 1/100 - 1/300. ELISA: 1/40000. Not yet tested in other applications. IHC-P~~N/A IF~~1:50~200 ICC~~N/A E~~N/A
Format	Liquid in PBS containing 50% glycerol, 0.5% BSA and 0.09% (W/V) sodium azide.
Storage Conditions	-20°C

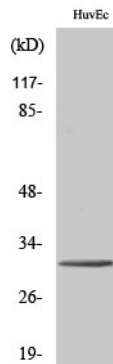
Protein Information

Name	TOLLIP
Function	Component of the signaling pathway of IL-1 and Toll-like receptors (PubMed: 10854325 , PubMed: 11751856). Inhibits cell activation by microbial products. Recruits IRAK1 to the IL-1 receptor complex (PubMed: 10854325). Inhibits IRAK1 phosphorylation and kinase activity (PubMed: 11751856). Connects the ubiquitin pathway to autophagy by functioning as a ubiquitin-ATG8 family adapter and thus mediating autophagic clearance of ubiquitin conjugates (PubMed: 25042851). The TOLLIP-dependent selective autophagy pathway plays an important role in clearance of cytotoxic polyQ proteins aggregates (PubMed: 25042851). In a complex with TOM1, recruits ubiquitin-conjugated proteins onto early endosomes (PubMed: 15047686). Binds to phosphatidylinositol 3-phosphate (PtdIns(3)P) (PubMed: 26320582).
Cellular Location	Cytoplasm. Endosome. Early endosome Note=Localized to endo/exosomal vesicles

Background

Component of the signaling pathway of IL-1 and Toll-like receptors. Inhibits cell activation by microbial products. Recruits IRAK1 to the IL-1 receptor complex. Inhibits IRAK1 phosphorylation and kinase activity (PubMed:[11751856](#)). Connects the ubiquitin pathway to autophagy by functioning as a ubiquitin- ATG8 family adapter and thus mediating autophagic clearance of ubiquitin conjugates. The TOLLIP-dependent selective autophagy pathway plays an important role in clearance of cytotoxic polyQ proteins aggregates (PubMed:[25042851](#)).

Images



Western Blot analysis of various cells using Tollip Polyclonal Antibody. Secondary antibody was diluted at 1:20000

Please note: All products are 'FOR RESEARCH USE ONLY. NOT FOR USE IN DIAGNOSTIC OR THERAPEUTIC PROCEDURES'.