

TRAP220 Polyclonal Antibody

Catalog # AP72908

Product Information

Application	WB, IF
Primary Accession	Q15648
Reactivity	Human, Mouse
Host	Rabbit
Clonality	Polyclonal
Calculated MW	168478

Additional Information

Gene ID	5469
Other Names	MED1; ARC205; CRSP1; CRSP200; DRIP205; DRIP230; PBP; PPARBP; PPARGBP; RB18A; TRAP220; TRIP2; Mediator of RNA polymerase II transcription subunit 1; Activator-recruited cofactor 205 kDa component; ARC205; Mediator complex subunit 1; Peroxiso
Dilution	WB~~Western Blot: 1/500 - 1/2000. Immunofluorescence: 1/200 - 1/1000. ELISA: 1/10000. Not yet tested in other applications. IF~~1:50~200
Format	Liquid in PBS containing 50% glycerol, 0.5% BSA and 0.09% (W/V) sodium azide.
Storage Conditions	-20°C

Protein Information

Name	MED1
Function	Component of the Mediator complex, a coactivator involved in the regulated transcription of nearly all RNA polymerase II-dependent genes. Mediator functions as a bridge to convey information from gene- specific regulatory proteins to the basal RNA polymerase II transcription machinery. Mediator is recruited to promoters by direct interactions with regulatory proteins and serves as a scaffold for the assembly of a functional preinitiation complex with RNA polymerase II and the general transcription factors (PubMed: 10406464 , PubMed: 11867769 , PubMed: 12037571 , PubMed: 12218053 , PubMed: 12556447 , PubMed: 14636573 , PubMed: 15340084 , PubMed: 15471764 , PubMed: 15989967 , PubMed: 16574658 , PubMed: 9653119). Acts as a coactivator for GATA1-mediated transcriptional activation during erythroid differentiation of K562 erythroleukemia cells (PubMed: 24245781).
Cellular Location	Nucleus. Note=A subset of the protein may enter the nucleolus subsequent to

phosphorylation by MAPK1 or MAPK3

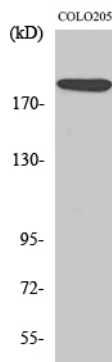
Tissue Location

Ubiquitously expressed.

Background

Component of the Mediator complex, a coactivator involved in the regulated transcription of nearly all RNA polymerase II-dependent genes. Mediator functions as a bridge to convey information from gene-specific regulatory proteins to the basal RNA polymerase II transcription machinery. Mediator is recruited to promoters by direct interactions with regulatory proteins and serves as a scaffold for the assembly of a functional preinitiation complex with RNA polymerase II and the general transcription factors (PubMed:[10406464](#), PubMed:[11867769](#), PubMed:[12037571](#), PubMed:[12218053](#), PubMed:[12556447](#), PubMed:[14636573](#), PubMed:[15340084](#), PubMed:[15471764](#), PubMed:[15989967](#), PubMed:[16574658](#), PubMed:[9653119](#)). Acts as a coactivator for GATA1-mediated transcriptional activation during erythroid differentiation of K562 erythroleukemia cells (PubMed:[24245781](#)).

Images



Western Blot analysis of various cells using TRAP220 Polyclonal Antibody. Secondary antibody was diluted at 1:20000 cells nucleus extracted by Minute TM Cytoplasmic and Nuclear Fractionation kit (SC-003, Invent biotech, MN, USA).

Please note: All products are 'FOR RESEARCH USE ONLY. NOT FOR USE IN DIAGNOSTIC OR THERAPEUTIC PROCEDURES'.