

TRIM3 Polyclonal Antibody

Catalog # AP72919

Product Information

Application	WB, IHC-P, IF
Primary Accession	O75382
Reactivity	Human, Mouse, Rat
Host	Rabbit
Clonality	Polyclonal
Calculated MW	80830

Additional Information

Gene ID	10612
Other Names	TRIM3; BERP; RNF22; RNF97; Tripartite motif-containing protein 3; Brain-expressed RING finger protein; RING finger protein 22; RING finger protein 97
Dilution	WB~~Western Blot: 1/500 - 1/2000. Immunohistochemistry: 1/100 - 1/300. Immunofluorescence: 1/200 - 1/1000. ELISA: 1/40000. Not yet tested in other applications. IHC-P~~N/A IF~~1:50~200
Format	Liquid in PBS containing 50% glycerol, 0.5% BSA and 0.09% (W/V) sodium azide.
Storage Conditions	-20°C

Protein Information

Name	TRIM3
Synonyms	BERP, RNF22, RNF97
Function	E3 ubiquitin ligase that plays essential roles in neuronal functions such as regulation of neuronal plasticity, learning, and memory (By similarity). In addition to its neuronal functions, participates in other biological processes such as innate immunity or cell cycle regulation. Component of the cytoskeleton-associated recycling or transport complex in neurons, polyubiquitinates gamma- actin, thus regulating neuronal plasticity, learning, and memory (By similarity). Ubiquitinates postsynaptic scaffold GKAP, a neuronal substrate involved in synaptic remodeling and thereby modulates dendritic spine morphology (By similarity). Positively regulates motility of microtubule-dependent motor protein KIF21B (By similarity). Induces growth arrest via its RING-dependent E3 ligase activity and ubiquitinates CDKN1A (PubMed: 24393003). Positively regulates TLR3- mediated signaling by mediating 'Lys-63'-linked polyubiquitination of TLR3 (PubMed: 32878999). In

turn, promotes the recognition and sorting of polyubiquitinated TLR3 by the ESCRT complexes (PubMed:[32878999](#)).

Cellular Location

Cytoplasm. Early endosome Golgi apparatus, trans-Golgi network Cell projection, dendrite {ECO:0000250|UniProtKB:Q9R1R2}. Note=Mainly located in the Golgi apparatus and transported to the early endosomes upon stimulation with dsRNA.

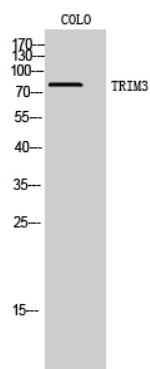
Tissue Location

Expressed in brain, heart, uterus and testis.

Background

Probably involved in vesicular trafficking via its association with the CART complex (PubMed: [15772161](#)). The CART complex is necessary for efficient transferrin receptor recycling but not for EGFR degradation (PubMed:[15772161](#)). Positively regulates motility of microtubule-dependent motor protein KIF21B (By similarity).

Images



Western Blot analysis of COLO cells using TRIM3 Polyclonal Antibody. Secondary antibody was diluted at 1:20000

Please note: All products are 'FOR RESEARCH USE ONLY. NOT FOR USE IN DIAGNOSTIC OR THERAPEUTIC PROCEDURES'.