

TROP-2 Polyclonal Antibody

Catalog # AP72928

Product Information

| | |
|--------------------------|------------------------|
| Application | WB, IHC-P |
| Primary Accession | P09758 |
| Reactivity | Human, Mouse, Rat |
| Host | Rabbit |
| Clonality | Polyclonal |
| Calculated MW | 35709 |

Additional Information

| | |
|---------------------------|--|
| Gene ID | 4070 |
| Other Names | TACSTD2; GA733-1; M1S1; TROP2; Tumor-associated calcium signal transducer 2; Cell surface glycoprotein Trop-2; Membrane component chromosome 1 surface marker 1; Pancreatic carcinoma marker protein GA733-1 |
| Dilution | WB~~Western Blot: 1/500 - 1/2000. Immunohistochemistry: 1/100 - 1/300. ELISA: 1/20000. Not yet tested in other applications. IHC-P~~N/A |
| Format | Liquid in PBS containing 50% glycerol, 0.5% BSA and 0.09% (W/V) sodium azide. |
| Storage Conditions | -20°C |

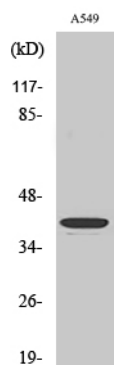
Protein Information

| | |
|--------------------------|--|
| Name | TACSTD2 |
| Synonyms | GA733-1, M1S1, TROP2 |
| Function | May function as a growth factor receptor. |
| Cellular Location | Membrane; Single-pass type I membrane protein. |
| Tissue Location | Placenta, pancreatic carcinoma cell lines. |

Background

May function as a growth factor receptor.

Images



Western Blot analysis of various cells using TROP-2 Polyclonal Antibody. Secondary antibody was diluted at 1:20000

Please note: All products are 'FOR RESEARCH USE ONLY. NOT FOR USE IN DIAGNOSTIC OR THERAPEUTIC PROCEDURES'.