

Trypsin-1 Polyclonal Antibody

Catalog # AP72936

Product Information

Application	WB
Primary Accession	P07477
Reactivity	Human
Host	Rabbit
Clonality	Polyclonal
Calculated MW	26558

Additional Information

Gene ID	5644
Other Names	PRSS1; TRP1; TRY1; TRYP1; Trypsin-1; Beta-trypsin; Cationic trypsinogen; Serine protease 1; Trypsin I
Dilution	WB~~Western Blot: 1/500 - 1/2000. ELISA: 1/10000. Not yet tested in other applications.
Format	Liquid in PBS containing 50% glycerol, 0.5% BSA and 0.09% (W/V) sodium azide.
Storage Conditions	-20°C

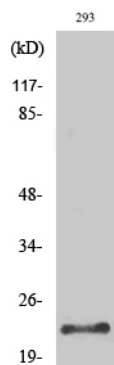
Protein Information

Name	PRSS1 (HGNC:9475)
Function	Has activity against the synthetic substrates Boc-Phe-Ser- Arg-Mec, Boc-Leu-Thr-Arg-Mec, Boc-Gln-Ala-Arg-Mec and Boc-Val-Pro-Arg- Mec. The single-chain form is more active than the two-chain form against all of these substrates.
Cellular Location	Secreted, extracellular space.

Background

Has activity against the synthetic substrates Boc-Phe- Ser-Arg-Mec, Boc-Leu-Thr-Arg-Mec, Boc-Gln-Ala-Arg-Mec and Boc-Val- Pro-Arg-Mec. The single-chain form is more active than the two- chain form against all of these substrates.

Images



Western Blot analysis of various cells using Trypsin-1 Polyclonal Antibody diluted at 1 : 500. Secondary antibody was diluted at 1:20000

Please note: All products are 'FOR RESEARCH USE ONLY. NOT FOR USE IN DIAGNOSTIC OR THERAPEUTIC PROCEDURES'.