

Trypsin-3 Polyclonal Antibody

Catalog # AP72937

Product Information

Application	WB, E
Primary Accession	P35030
Reactivity	Human, Rat, Mouse
Host	Rabbit
Clonality	Polyclonal
Calculated MW	32529

Additional Information

Gene ID	5646
Other Names	PRSS3; PRSS4; TRY3; TRY4; Trypsin-3; Brain trypsinogen; Mesotrypsinogen; Serine protease 3; Serine protease 4; Trypsin III; Trypsin IV
Dilution	WB~~Western Blot: 1/500 - 1/2000. ELISA: 1/40000. Not yet tested in other applications. E~~N/A
Format	Liquid in PBS containing 50% glycerol, 0.5% BSA and 0.09% (W/V) sodium azide.
Storage Conditions	-20°C

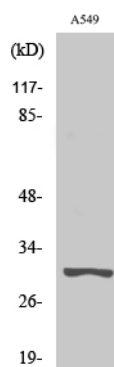
Protein Information

Name	PRSS3
Synonyms	PRSS4, TRY3, TRY4
Function	Digestive protease that cleaves proteins preferentially after an Arg residue and has proteolytic activity toward Kunitz-type trypsin inhibitors.
Cellular Location	Secreted.
Tissue Location	Detected in pancreas and pancreatic fluid (at protein level) (PubMed:6698368). Expressed in pancreas and brain (PubMed:8294000). Detected in ileum (PubMed:12021776)

Background

Digestive protease that cleaves proteins preferentially after an Arg residue and has proteolytic activity toward Kunitz- type trypsin inhibitors.

Images



Western Blot analysis of various cells using Trypsin-3 Polyclonal Antibody. Secondary antibody was diluted at 1:20000

Please note: All products are 'FOR RESEARCH USE ONLY. NOT FOR USE IN DIAGNOSTIC OR THERAPEUTIC PROCEDURES'.