

TSSK 4 Polyclonal Antibody

Catalog # AP72950

Product Information

Application	WB
Primary Accession	Q6SA08
Reactivity	Human, Mouse
Host	Rabbit
Clonality	Polyclonal
Calculated MW	37454

Additional Information

Gene ID	283629
Other Names	TSSK4; C14orf20; STK22E; TSSK5; Testis-specific serine/threonine-protein kinase 4; TSK-4; TSSK-4; Testis-specific kinase 4; Serine/threonine-protein kinase 22E
Dilution	WB~~Western Blot: 1/500 - 1/2000. ELISA: 1/10000. Not yet tested in other applications.
Format	Liquid in PBS containing 50% glycerol, 0.5% BSA and 0.09% (W/V) sodium azide.
Storage Conditions	-20°C

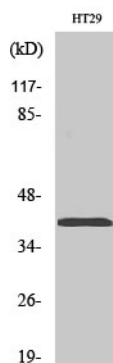
Protein Information

Name	TSSK4 (HGNC:19825)
Function	Serine/threonine kinase which is involved in male germ cell development and in mature sperm function (By similarity). May be involved in the Cre/Creb signaling pathway (By similarity). Phosphorylates CREB1 on 'Ser-133' in vitro and can stimulate Cre/Creb pathway in cells (PubMed: 15964553). Phosphorylates CREM on 'Ser-116' in vitro (By similarity). Phosphorylates ODF2 on 'Ser-95' (By similarity).
Cellular Location	Cytoplasmic vesicle, secretory vesicle, acrosome {ECO:0000250 UniProtKB:Q9D411}. Cell projection, cilium, flagellum {ECO:0000250 UniProtKB:Q9D411}. Note=In spermatozoa, present in the sperm head and in the flagellum. {ECO:0000250 UniProtKB:Q9D411}
Tissue Location	Expressed only in the testis.

Background

Serine/threonine kinase which is involved in male germ cell development and in mature sperm function (By similarity). May be involved in the Cre/Creb signaling pathway (By similarity). Phosphorylates CREB1 on 'Ser-133' in vitro and can stimulate Cre/Creb pathway in cells (PubMed:[15964553](#)). Phosphorylates CREM on 'Ser-116' in vitro (By similarity). Phosphorylates ODF2 on 'Ser-95' (By similarity).

Images



Western Blot analysis of various cells using TSSK 4 Polyclonal Antibody. Secondary antibody was diluted at 1:20000

Please note: All products are 'FOR RESEARCH USE ONLY. NOT FOR USE IN DIAGNOSTIC OR THERAPEUTIC PROCEDURES'.