

TUSC2 Polyclonal Antibody

Catalog # AP72966

Product Information

Application	WB, IHC-P, IF, ICC, E
Primary Accession	O75896
Reactivity	Human, Mouse
Host	Rabbit
Clonality	Polyclonal
Calculated MW	12074

Additional Information

Gene ID	11334
Other Names	TUSC2; C3orf11; FUS1; LGCC; PDAP2; Tumor suppressor candidate 2; Fusion 1 protein; Fus-1 protein; PDGFA-associated protein 2
Dilution	WB~~Western Blot: 1/500 - 1/2000. Immunohistochemistry: 1/100 - 1/300. ELISA: 1/5000. Not yet tested in other applications. IHC-P~~Western Blot: 1/500 - 1/2000. Immunohistochemistry: 1/100 - 1/300. ELISA: 1/5000. Not yet tested in other applications. IF~~1:50~200 ICC~~N/A E~~N/A
Format	Liquid in PBS containing 50% glycerol, 0.5% BSA and 0.09% (W/V) sodium azide.
Storage Conditions	-20°C

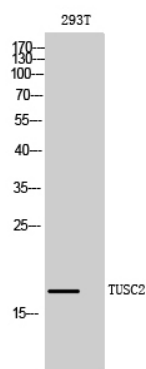
Protein Information

Name	TUSC2
Synonyms	C3orf11, FUS1, LGCC, PDAP2
Function	May function as a tumor suppressor, inhibiting colony formation, causing G1 arrest and ultimately inducing apoptosis in homozygous 3p21.3 120-kb region-deficient cells.
Tissue Location	Strong expression in heart, lung, skeletal muscle, kidney, and pancreas, followed by brain and liver, lowest levels in placenta

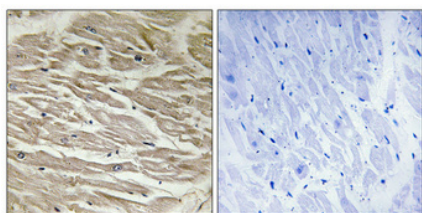
Background

May function as a tumor suppressor, inhibiting colony formation, causing G1 arrest and ultimately inducing apoptosis in homozygous 3p21.3 120-kb region-deficient cells.

Images



Western Blot analysis of 293T cells using TUSC2
Polyclonal Antibody diluted at 1 : 1000. Secondary
antibody was diluted at 1:20000



Immunohistochemical analysis of paraffin-embedded
Human heart. Antibody was diluted at
1:100(4°,overnight). High-pressure and temperature
Tris-EDTA,pH8.0 was used for antigen retrieval. Negative
control (right) obtained from antibody was pre-absorbed by
immunogen peptide.

Please note: All products are 'FOR RESEARCH USE ONLY. NOT FOR USE IN DIAGNOSTIC OR THERAPEUTIC PROCEDURES'.