

UBE2D2 Polyclonal Antibody

Catalog # AP72981

Product Information

Application	WB, E
Primary Accession	P62837
Reactivity	Human, Mouse, Rat
Host	Rabbit
Clonality	Polyclonal
Calculated MW	16735

Additional Information

Gene ID	7322
Other Names	UBE2D2; UBC4; UBC5B; UBCH4; UBCH5B; Ubiquitin-conjugating enzyme E2 D2; Ubiquitin carrier protein D2; Ubiquitin-conjugating enzyme E2(17)KB 2; Ubiquitin-conjugating enzyme E2-17 kDa 2; Ubiquitin-protein ligase D2
Dilution	WB~~Western Blot: 1/500 - 1/2000. ELISA: 1/10000. Not yet tested in other applications. E~~N/A
Format	Liquid in PBS containing 50% glycerol, 0.5% BSA and 0.09% (W/V) sodium azide.
Storage Conditions	-20°C

Protein Information

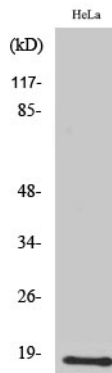
Name	UBE2D2
Synonyms	PUBC1, UBC4, UBC5B, UBCH4, UBCH5B
Function	Accepts ubiquitin from the E1 complex and catalyzes its covalent attachment to other proteins (PubMed: 10329681 , PubMed: 18042044 , PubMed: 18703417 , PubMed: 20061386 , PubMed: 20403326 , PubMed: 20525694 , PubMed: 26475854 , PubMed: 28322253). Catalyzes 'Lys-48'-linked polyubiquitination (PubMed: 10329681 , PubMed: 18042044 , PubMed: 18359941 , PubMed: 18703417 , PubMed: 20061386 , PubMed: 20403326 , PubMed: 20525694 , PubMed: 26475854). Mediates the selective degradation of short-lived and abnormal proteins (PubMed: 10329681 , PubMed: 18042044 , PubMed: 18359941 , PubMed: 18703417 , PubMed: 20061386 , PubMed: 20403326 , PubMed: 20525694 , PubMed: 26475854). Functions in the E6/E6-AP-induced ubiquitination of p53/TP53 (PubMed: 15280377). Mediates ubiquitination of PEX5 and SQSTM1 and autoubiquitination of STUB1 and TRAF6 (PubMed: 18359941 , PubMed: 28322253). Involved in the signal-induced

conjugation and subsequent degradation of NFKBIA, FBXW2-mediated GCM1 ubiquitination and degradation, MDM2-dependent degradation of p53/TP53 and the activation of MAVS in the mitochondria by RIGI in response to viral infection (PubMed:[18703417](#), PubMed:[20403326](#)). Essential for viral activation of IRF3 (PubMed:[19854139](#)).

Background

Accepts ubiquitin from the E1 complex and catalyzes its covalent attachment to other proteins. In vitro catalyzes 'Lys- 48'-linked polyubiquitination. Mediates the selective degradation of short-lived and abnormal proteins. Functions in the E6/E6-AP- induced ubiquitination of p53/TP53. Mediates ubiquitination of PEX5 and autoubiquitination of STUB1 and TRAF6. Involved in the signal-induced conjugation and subsequent degradation of NFKBIA, FBXW2-mediated GCM1 ubiquitination and degradation, MDM2-dependent degradation of p53/TP53 and the activation of MAVS in the mitochondria by DDX58/RIG-I in response to viral infection. Essential for viral activation of IRF3.

Images



Western Blot analysis of various cells using UBE2D2 Polyclonal Antibody diluted at 1 : 2000. Secondary antibody was diluted at 1:20000

Please note: All products are 'FOR RESEARCH USE ONLY. NOT FOR USE IN DIAGNOSTIC OR THERAPEUTIC PROCEDURES'.