

MIC1 Antibody (Center)

Purified Rabbit Polyclonal Antibody (Pab)

Catalog # AP7299c

Product Information

Application	WB, E
Primary Accession	Q96DM3
Reactivity	Human
Host	Rabbit
Clonality	Polyclonal
Isotype	Rabbit IgG
Clone Names	RB14454
Calculated MW	74975
Antigen Region	399-428

Additional Information

Gene ID	29919
Other Names	Uncharacterized protein C18orf8, Colon cancer-associated protein Mic1, Mic-1, C18orf8, MIC1
Target/Specificity	This MIC1 antibody is generated from rabbits immunized with a KLH conjugated synthetic peptide between 399-428 amino acids from the Central region of human MIC1.
Dilution	WB~~1:1000 E~~Use at an assay dependent concentration.
Format	Purified polyclonal antibody supplied in PBS with 0.09% (W/V) sodium azide. This antibody is prepared by Saturated Ammonium Sulfate (SAS) precipitation followed by dialysis against PBS.
Storage	Maintain refrigerated at 2-8°C for up to 2 weeks. For long term storage store at -20°C in small aliquots to prevent freeze-thaw cycles.
Precautions	MIC1 Antibody (Center) is for research use only and not for use in diagnostic or therapeutic procedures.

Protein Information

Name	RMC1 (HGNC:24326)
Synonyms	C18orf8, MIC1, WDR98
Function	Component of the CCZ1-MON1 RAB7A guanine exchange factor (GEF). Acts as a positive regulator of CCZ1-MON1A/B function necessary for

endosomal/autophagic flux and efficient RAB7A localization (PubMed:[29038162](#)).

Cellular Location

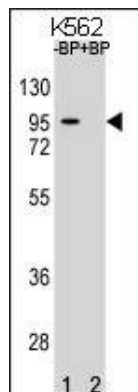
Lysosome membrane. Late endosome membrane

Background

Colon cancer-associated protein Mic1.

References

Images



Western blot analysis of anti-MIC1 (Center) Pab (Cat.#AP7299c) pre-incubated with and without blocking peptide (Cat.#BP7299c) in K562 cell line lysate. MIC1(arrow) was detected using the purified Pab.

Please note: All products are 'FOR RESEARCH USE ONLY. NOT FOR USE IN DIAGNOSTIC OR THERAPEUTIC PROCEDURES'.