

# VGF Polyclonal Antibody

Catalog # AP73058

## Product Information

---

<b>Application</b>	WB, IHC-P
<b>Primary Accession</b>	<a href="#">O15240</a>
<b>Reactivity</b>	Human, Mouse, Rat
<b>Host</b>	Rabbit
<b>Clonality</b>	Polyclonal
<b>Calculated MW</b>	67258

## Additional Information

---

<b>Gene ID</b>	7425
<b>Other Names</b>	VGF; Neurosecretory protein VGF
<b>Dilution</b>	WB~~Western Blot: 1/500 - 1/2000. Immunohistochemistry: 1/100 - 1/300. ELISA: 1/40000. Not yet tested in other applications. IHC-P~~N/A
<b>Format</b>	Liquid in PBS containing 50% glycerol, 0.5% BSA and 0.09% (W/V) sodium azide.
<b>Storage Conditions</b>	-20°C

## Protein Information

---

<b>Name</b>	VGF
<b>Function</b>	[Neurosecretory protein VGF]: Secreted polypeptide that is packaged and proteolytically processed by prohormone convertases PCSK1 and PCSK2 in a cell-type-specific manner (By similarity). VGF and peptides derived from its processing play many roles in neurogenesis and neuroplasticity associated with learning, memory, depression and chronic pain (By similarity).
<b>Cellular Location</b>	[Neurosecretory protein VGF]: Secreted. Cytoplasmic vesicle, secretory vesicle. Note=Stored in secretory vesicles and then secreted, NERP peptides colocalize with vasopressin in the storage granules of hypothalamus
<b>Tissue Location</b>	Central and peripheral nervous systems, synthesized exclusively in neuronal and neuroendocrine cells

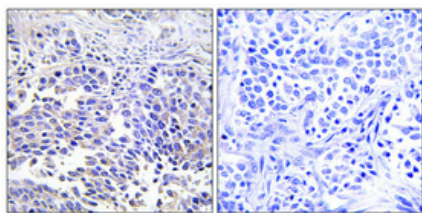
## Background

---

May be involved in the regulation of cell-cell interactions or in synaptogenesis during the maturation of the nervous system.

## Images

---



Immunohistochemical analysis of paraffin-embedded Human lung cancer. Antibody was diluted at 1:100(4°,overnight). High-pressure and temperature Tris-EDTA,pH8.0 was used for antigen retrieval. Negative contrl (right) obtaned from antibody was pre-absorbed by immunogen peptide.

Please note: All products are 'FOR RESEARCH USE ONLY. NOT FOR USE IN DIAGNOSTIC OR THERAPEUTIC PROCEDURES'.