

CA14 Antibody (N-term)

Purified Rabbit Polyclonal Antibody (Pab)

Catalog # AP7306a

Product Information

Application	WB, FC, E
Primary Accession	Q9ULX7
Reactivity	Human
Host	Rabbit
Clonality	Polyclonal
Isotype	Rabbit IgG
Clone Names	RB18366
Calculated MW	37668
Antigen Region	51-80

Additional Information

Gene ID	23632
Other Names	Carbonic anhydrase 14, Carbonate dehydratase XIV, Carbonic anhydrase XIV, CA-XIV, CA14
Target/Specificity	This CA14 antibody is generated from rabbits immunized with a KLH conjugated synthetic peptide between 51-80 amino acids from the N-terminal region of human CA14.
Dilution	WB~~1:1000 FC~~1:10~50 E~~Use at an assay dependent concentration.
Format	Purified polyclonal antibody supplied in PBS with 0.09% (W/V) sodium azide. This antibody is prepared by Saturated Ammonium Sulfate (SAS) precipitation followed by dialysis against PBS.
Storage	Maintain refrigerated at 2-8°C for up to 2 weeks. For long term storage store at -20°C in small aliquots to prevent freeze-thaw cycles.
Precautions	CA14 Antibody (N-term) is for research use only and not for use in diagnostic or therapeutic procedures.

Protein Information

Name	CA14
Function	Reversible hydration of carbon dioxide.
Cellular Location	Membrane; Single-pass type I membrane protein

Tissue Location

High expression in all parts of the central nervous system and lower expression in adult liver, heart, small intestine, colon, kidney, urinary bladder and skeletal muscle

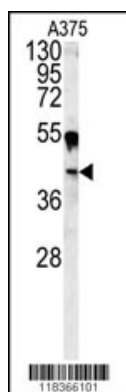
Background

CA14 belongs a large family of zinc metalloenzymes that catalyze the versatile hydration of carbon dioxide. The protein is predicted to be a type I membrane protein and shares highest sequence similarity with the other transmembrane CA isoform, CA XII; however, they have different patterns of tissue-specific expression and thus may play different physiologic roles.

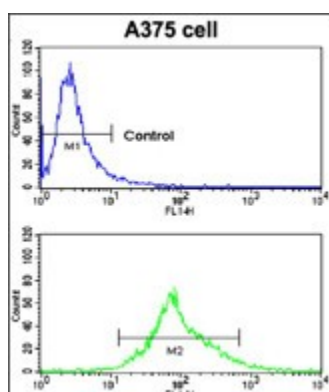
References

Parkkila,S. Natl. Acad. Sci. U.S.A. 98 (4), 1918-1923 (2001)
Fujikawa-Adachi,K., Nishimori,I. Genomics 61 (1), 74-81 (1999)
Tarun,A.S., Bryant,B. Chem. Senses 28 (7), 621-629 (2003)

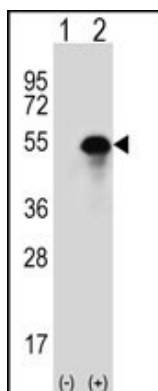
Images



Western blot analysis of CA14 antibody (N-term) (Cat.#AP7306a) in A375 cell line lysates (35ug/lane). CA14 (arrow) was detected using the purified Pab.



Flow cytometric analysis of A375 cells using CA14 Antibody (N-term) (bottom histogram) compared to a negative control cell (top histogram). FITC-conjugated goat-anti-rabbit secondary antibodies were used for the analysis.



Western blot analysis of CA14 (arrow) using rabbit polyclonal CA14 Antibody (N-term) (Cat.#AP7306a). 293 cell lysates (2 ug/lane) either nontransfected (Lane 1) or transiently transfected (Lane 2) with the CA14 gene.

Please note: All products are 'FOR RESEARCH USE ONLY. NOT FOR USE IN DIAGNOSTIC OR THERAPEUTIC PROCEDURES'.