

XPLN Polyclonal Antibody

Catalog # AP73099

Product Information

| | |
|--------------------------|------------------------|
| Application | WB, IHC-P |
| Primary Accession | Q9NR81 |
| Reactivity | Human, Mouse, Rat |
| Host | Rabbit |
| Clonality | Polyclonal |
| Calculated MW | 59783 |

Additional Information

| | |
|---------------------------|---|
| Gene ID | 50650 |
| Other Names | ARHGEF3; Rho guanine nucleotide exchange factor 3; Exchange factor found in platelets and leukemic and neuronal tissues; XPLN |
| Dilution | WB~~Western Blot: 1/500 - 1/2000.IHC-p:1:50-300 ELISA: 1/20000. Not yet tested in other applications. IHC-P~~N/A |
| Format | Liquid in PBS containing 50% glycerol, 0.5% BSA and 0.09% (W/V) sodium azide. |
| Storage Conditions | -20°C |

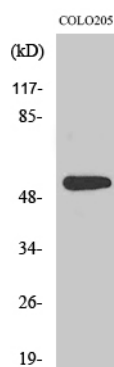
Protein Information

| | |
|--------------------------|---|
| Name | ARHGEF3 |
| Function | Acts as a guanine nucleotide exchange factor (GEF) for RhoA and RhoB GTPases. |
| Cellular Location | Cytoplasm. |
| Tissue Location | Widely expressed. Highest levels are found in adult brain and skeletal muscle. Lower levels are found in heart and kidney |

Background

Acts as guanine nucleotide exchange factor (GEF) for RhoA and RhoB GTPases.

Images



Western Blot analysis of various cells using XPLN Polyclonal Antibody. Secondary antibody was diluted at 1:20000

Please note: All products are 'FOR RESEARCH USE ONLY. NOT FOR USE IN DIAGNOSTIC OR THERAPEUTIC PROCEDURES'.