

CAPN9 Antibody (N-term)

Purified Rabbit Polyclonal Antibody (Pab)

Catalog # AP7310a

Product Information

Application	WB, E
Primary Accession	O14815
Reactivity	Human
Host	Rabbit
Clonality	Polyclonal
Isotype	Rabbit IgG
Clone Names	RB18394
Calculated MW	79097
Antigen Region	49-78

Additional Information

Gene ID	10753
Other Names	Calpain-9, 3422-, Digestive tract-specific calpain, New calpain 4, nCL-4, Protein CG36, CAPN9, NCL4
Target/Specificity	This CAPN9 antibody is generated from rabbits immunized with a KLH conjugated synthetic peptide between 49-78 amino acids from the N-terminal region of human CAPN9.
Dilution	WB~~1:1000 E~~Use at an assay dependent concentration.
Format	Purified polyclonal antibody supplied in PBS with 0.09% (W/V) sodium azide. This antibody is prepared by Saturated Ammonium Sulfate (SAS) precipitation followed by dialysis against PBS.
Storage	Maintain refrigerated at 2-8°C for up to 2 weeks. For long term storage store at -20°C in small aliquots to prevent freeze-thaw cycles.
Precautions	CAPN9 Antibody (N-term) is for research use only and not for use in diagnostic or therapeutic procedures.

Protein Information

Name	CAPN9
Synonyms	NCL4
Function	Calcium-regulated non-lysosomal thiol-protease.

Tissue Location

Expressed predominantly in stomach.

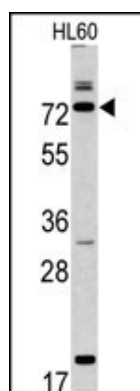
Background

CAPN9 has been implicated in neurodegenerative processes, as their activation can be triggered by calcium influx and oxidative stress. The protein is expressed predominantly in stomach and small intestine and may have specialized functions in the digestive tract. This protein is thought to be associated with gastric cancer.

References

Huang,Y. and Wang,K.K. Trends Mol Med 7 (8), 355-362 (2001)
Lee,H.J., Tomioka,S. Arch. Biochem. Biophys. 362 (1), 22-31 (1999)
Lee,H.J., Sorimachi,H. Biol. Chem. 379 (2), 175-183 (1998)
Suzuki,K., Sorimachi,H. Biol. Chem. Hoppe-Seyler 376 (9), 523-529 (1995)

Images



Western blot analysis of CAPN9 antibody (N-term)
(Cat.#AP7310a) in HL60 cell line lysates (35ug/lane).
CAPN9 (arrow) was detected using the purified Pab.

Please note: All products are 'FOR RESEARCH USE ONLY. NOT FOR USE IN DIAGNOSTIC OR THERAPEUTIC PROCEDURES'.