

ZC3H11A Polyclonal Antibody

Catalog # AP73119

Product Information

Application	WB
Primary Accession	O75152
Reactivity	Human, Monkey
Host	Rabbit
Clonality	Polyclonal
Calculated MW	89131

Additional Information

Gene ID	9877
Other Names	ZC3H11A; KIAA0663; ZC3HDC11A; Zinc finger CCCH domain-containing protein 11A
Dilution	WB~~Western Blot: 1/500 - 1/2000. ELISA: 1/20000. Not yet tested in other applications.
Format	Liquid in PBS containing 50% glycerol, 0.5% BSA and 0.09% (W/V) sodium azide.
Storage Conditions	-20°C

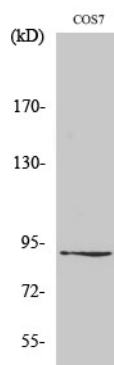
Protein Information

Name	ZC3H11A
Synonyms	KIAA0663, ZC3HDC11A
Function	Through its association with TREX complex components, may participate in the export and post-transcriptional coordination of selected mRNA transcripts, including those required to maintain the metabolic processes in embryonic cells (PubMed: 22928037 , PubMed: 37356722). Binds RNA (PubMed: 29610341 , PubMed: 37356722).
Cellular Location	Nucleus. Nucleus speckle. Note=Retained in nuclear speckles though interaction with PABPN1.

Background

Involved in nuclear mRNA export; probably mediated by association with the TREX complex.

Images



Western Blot analysis of various cells using ZC3H11A Polyclonal Antibody diluted at 1 : 1000. Secondary antibody was diluted at 1:20000

Please note: All products are 'FOR RESEARCH USE ONLY. NOT FOR USE IN DIAGNOSTIC OR THERAPEUTIC PROCEDURES'.